

COOLING CAPACITY: 17,800 - 56,500 BTU/H

**ENERGY-EFFICIENT  
 SPLIT SYSTEM AIR CONDITIONER  
 UP TO 14 SEER / 12 EER**



**Contents**

Nomenclature..... 2  
 Product Specifications..... 3  
 Expanded Cooling Data..... 4  
 Dimensions ..... 24  
 Wiring Diagrams ..... 25  
 Accessories ..... 28

**Standard Features**

- Energy-efficient compressor
- Single-speed ECM condenser fan motor
- Factory-installed filter drier
- Copper tube/aluminum fin coil
- Service valves with sweat connections and easy-access gauge ports
- Contactor with lug connection
- Ground lug connection
- AHRI Certified; ETL Listed

**Cabinet Features**

- Heavy-gauge galvanized-steel cabinet with louvered sound control top
- Steel louver coil guard
- Attractive Architectural Gray powder-paint finish with 500-hour salt-spray approval
- Top and side maintenance access
- Single-panel access to controls with space provided for field-installed accessories



COMPANY WITH  
 QUALITY SYSTEM  
 CERTIFIED BY DNV GL  
 = ISO 9001 =

COMPANY WITH  
 ENVIRONMENTAL SYSTEM  
 CERTIFIED BY DNV GL  
 = ISO 14001 =

\* Complete warranty details available from your local dealer or at [www.amana-hac.com](http://www.amana-hac.com). To receive the 2-Year Unit Replacement Limited Warranty and 10-Year Parts Limited Warranty, online registration must be completed within 60 days of installation. Online registration is not required in California or Quebec.

	A	N	X	13	036	1	AA		
	1	2	3	4,5	6,7,8	9	10,11		
<b>Brand</b>	A Amana® Brand						<b>Engineering *</b>		Major/ Minor Revisions
									* Not used for order or inventory control.
<b>Product Category</b>	S Split System						<b>Electrical</b>		1- 208/230 V, 1 Phase, 60 Hz
	N Nominal Split System								
<b>Unit Type</b>	X Condenser R-410A						<b>Nominal Capacity</b>		
	Z Heat Pump R-410A								
<b>Efficiency</b>	13 13 SEER      16 16 SEER								018    1½ Tons      042    3½ Tons
	14 14 SEER      18 18 SEER								024    2 Tons          048    4 Tons
									030    2½ Tons        060    5 Tons
									036    3 Tons          061    5 Tons (high capacity)

	ANX13 0181A*	ANX13 0181B*	ANX13 0241A*	ANX13 0241B*	ANX13 0301A*	ANX13 0301B*	ANX13 0361A*	ANX13 0421A*	ANX13 0481A*	ANX13 0601A*	ANX13 0611A*
<b>CAPACITIES</b>											
Nominal Cooling (BTU/h)	17,800	17,800	23,000	23,000	28,400	28,400	33,600	40,000	46,000	57,000	56,500
SEER / EER	13 / 11	13 / 11	13 / 11	13 / 11	13 / 11	13 / 11	13 / 11	13 / 11	13 / 11	13 / 11	13 / 11
Decibels	75	72	71	75	73	74	74	75	76	77	77
<b>COMPRESSOR</b>											
RLA	9.0	6.0	13.5	7.7	12.8	10.5	14.1	17.9	19.9	25	26.4
LRA	48	37.5	58.3	37	64	47	77	112	109	134	134
<b>CONDENSER FAN MOTOR</b>											
Horsepower	1/8	1/8	1/8	1/8	1/8	1/8	1/4	1/4	1/4	1/4	1/4
FLA	0.7	0.7	0.7	0.65	0.65	0.7	1.4	1.4	1.4	1.2	1.3
<b>REFRIGERATION SYSTEM</b>											
Refrigerant Line Size <sup>1</sup>											
Liquid Line Size ("O.D.)	3/8"	3/8"	3/8"	3/8"	3/8"	3/8"	3/8"	3/8"	3/8"	3/8"	3/8"
Suction Line Size ("O.D.)	3/4"	3/4"	3/4"	3/4"	3/4"	3/4"	7/8"	1 1/8"	1 1/8"	1 1/8"	1 1/8"
Refrigerant Connection Size											
Liquid Valve Size ("O.D.)	3/8"	3/8"	3/8"	3/8"	3/8"	3/8"	3/8"	3/8"	3/8"	3/8"	3/8"
Suction Valve Size ("O.D.) <sup>4 5</sup>	3/4"	3/4"	3/4"	3/4"	3/4"	3/4"	3/4" <sup>3</sup>	7/8" <sup>4</sup>	7/8" <sup>4</sup>	7/8" <sup>4</sup>	7/8" <sup>4</sup>
Valve Type	Sweat	Sweat	Sweat	Sweat	Sweat	Sweat	Sweat	Sweat	Sweat	Sweat	Sweat
Refrigerant Charge	69	63	63	60	60	68	62	80	91	94	111
Shipped with Orifice Size	0.051	0.052	0.057	0.055	0.065	0.067	0.071	0.074	0.078	0.088	0.086
<b>ELECTRICAL DATA</b>											
Voltage/ Phase (60 Hz)	208-230/ 1	208-230/ 1	208-230/ 1	208-230/ 1	208-230/ 1	208/230-60	208-230/ 1	208-230/ 1	208-230/ 1	208-230/ 1	208-230/ 1
Minimum Circuit Ampacity <sup>2</sup>	12	8.2	17.8	10.3	16.7	13.8	19	23.8	26.3	32.5	34.3
Max. Overcurrent Protection <sup>3</sup>	20 amps	15 amps	30 amps	15 amps	25 amps	20	30 amps	40 amps	45 amps	50 amps	60 amps
Min / Max Volts	197/253	197/253	197/253	197/253	197/253	197/253	197/253	197/253	197/253	197/253	197/253
Electrical Conduit Size	1/2" or 3/4"	1/2" or 3/4"	1/2" or 3/4"	1/2" or 3/4"	1/2" or 3/4"	1/2" or 3/4"	1/2" or 3/4"	1/2" or 3/4"	1/2" or 3/4"	1/2" or 3/4"	1/2" or 3/4"
<b>SHIP WEIGHT (LBS)</b>											
	145	141	145	120	134	153	157	206	225	209	231

<sup>1</sup> Line sizes denoted for 25' line sets, tested and rated in accordance with AHRI Standard 210/240. For other line-set lengths or sizes, refer to the installation and Operating instructions and/or the long line-set guidelines.

<sup>2</sup> Wire size should be determined in accordance with National Electrical Codes; extensive wire runs will require larger wire sizes

<sup>3</sup> Must use time-delay fuses or HACR-type circuit breakers of the same size as noted.

<sup>4</sup> Installer will need to supply 3/4" to 7/8" adapters for suction line connections.

<sup>5</sup> Installer will need to supply 7/8" to 1 1/8" adapters for suction line connections.

**NOTES**

- Always check the S&R plate for electrical data on the unit being installed.
- Unit is charged with refrigerant for 15' of 3/8" liquid line. System charge must be adjusted per Installation Instructions Final Charge Procedure.
- This product may not be installed in the Southeast (including Hawaii) or Southwest Regions as of Jan. 1, 2015.

IDB		OUTDOOR AMBIENT TEMPERATURE																																			
		65°F						75°F						85°F						95°F						105°F						115°F					
		59	63	67	71	59	63	67	71	59	63	67	71	59	63	67	71	59	63	67	71	59	63	67	71	59	63	67	71	59	63	67	71				
70	525	MBh	15.8	16.4	17.9	-	15.4	16.0	17.5	-	15.1	15.6	17.1	-	14.7	15.2	16.7	-	14.0	14.5	15.9	-	12.9	13.4	14.7	-	12.9	13.4	14.7	-	12.9	13.4	14.7	-			
		S/T	0.67	0.56	0.39	-	0.70	0.58	0.40	-	0.72	0.60	0.41	-	0.74	0.62	0.43	-	0.77	0.64	0.44	-	0.77	0.64	0.44	-	0.77	0.64	0.44	-	0.77	0.64	0.44	-			
	ΔT	19	16	12	-	19	16	12	-	19	16	12	-	19	16	12	-	19	16	12	-	18	15	12	-	18	15	12	-	18	15	12	-				
	KW	1.26	1.29	1.33	-	1.35	1.38	1.42	-	1.43	1.46	1.50	-	1.50	1.53	1.57	-	1.55	1.59	1.64	-	1.60	1.64	1.69	-	1.60	1.64	1.69	-	1.60	1.64	1.69	-				
	Amps	4.7	4.8	5.0	-	5.1	5.2	5.4	-	5.5	5.6	5.8	-	5.9	6.0	6.2	-	6.2	6.4	6.6	-	6.6	6.7	7.0	-	6.6	6.7	7.0	-	6.6	6.7	7.0	-				
	HI PR	214	230	243	-	240	258	272	-	272	293	310	-	310	334	353	-	349	376	397	-	386	415	438	-	386	415	438	-	386	415	438	-				
	LO PR	101	108	118	-	107	114	125	-	111	119	129	-	117	125	136	-	123	130	142	-	127	135	147	-	127	135	147	-	127	135	147	-				
	MBh	17.1	17.7	19.4	-	16.7	17.3	19.0	-	16.3	16.9	18.5	-	15.9	16.5	18.1	-	15.1	15.7	17.2	-	14.0	14.5	15.9	-	14.0	14.5	15.9	-	14.0	14.5	15.9	-				
	S/T	0.70	0.58	0.40	-	0.72	0.60	0.42	-	0.74	0.62	0.43	-	0.77	0.64	0.44	-	0.80	0.66	0.46	-	0.80	0.66	0.46	-	0.80	0.66	0.46	-	0.80	0.66	0.46	-				
	ΔT	18	16	12	-	19	16	12	-	19	16	12	-	19	16	12	-	18	16	12	-	18	16	12	-	17	15	11	-	17	15	11	-				
KW	1.29	1.32	1.35	-	1.38	1.41	1.45	-	1.46	1.49	1.54	-	1.53	1.56	1.61	-	1.59	1.62	1.67	-	1.64	1.68	1.73	-	1.64	1.68	1.73	-	1.64	1.68	1.73	-					
Amps	4.8	4.9	5.1	-	5.2	5.3	5.5	-	5.6	5.8	6.0	-	6.0	6.2	6.4	-	6.4	6.6	6.8	-	6.8	6.9	7.2	-	6.8	6.9	7.2	-	6.8	6.9	7.2	-					
HI PR	220	237	250	-	247	266	281	-	281	302	319	-	320	344	364	-	360	387	409	-	398	428	452	-	398	428	452	-	398	428	452	-					
LO PR	105	111	122	-	111	118	128	-	115	122	133	-	121	128	140	-	126	135	147	-	131	139	152	-	131	139	152	-	131	139	152	-					
MBh	17.6	18.3	20.0	-	17.2	17.9	19.6	-	16.8	17.4	19.1	-	16.4	17.0	18.6	-	15.6	16.2	17.7	-	14.4	15.0	16.4	-	14.4	15.0	16.4	-	14.4	15.0	16.4	-					
S/T	0.73	0.61	0.42	-	0.76	0.63	0.44	-	0.78	0.65	0.45	-	0.80	0.67	0.46	-	0.83	0.70	0.48	-	0.84	0.70	0.49	-	0.84	0.70	0.49	-	0.84	0.70	0.49	-					
ΔT	18	15	12	-	18	15	12	-	18	15	12	-	18	16	12	-	18	15	12	-	17	14	11	-	17	14	11	-	17	14	11	-					
KW	1.30	1.33	1.36	-	1.39	1.42	1.46	-	1.47	1.50	1.55	-	1.54	1.58	1.62	-	1.60	1.64	1.69	-	1.66	1.69	1.74	-	1.66	1.69	1.74	-	1.66	1.69	1.74	-					
Amps	4.9	5.0	5.1	-	5.3	5.4	5.5	-	5.7	5.8	6.0	-	6.1	6.2	6.4	-	6.5	6.6	6.8	-	6.8	7.0	7.2	-	6.8	7.0	7.2	-	6.8	7.0	7.2	-					
HI PR	222	239	253	-	249	268	283	-	284	305	322	-	323	348	367	-	364	391	413	-	402	432	456	-	402	432	456	-	402	432	456	-					
LO PR	106	112	123	-	112	119	130	-	116	123	135	-	122	130	142	-	128	136	148	-	132	141	153	-	132	141	153	-	132	141	153	-					

IDB		OUTDOOR AMBIENT TEMPERATURE																																			
		65°F						75°F						85°F						95°F						105°F						115°F					
		59	63	67	71	59	63	67	71	59	63	67	71	59	63	67	71	59	63	67	71	59	63	67	71	59	63	67	71	59	63	67	71				
75	525	MBh	16.1	16.5	17.9	19.2	15.7	16.2	17.5	18.8	15.3	15.8	17.1	18.3	15.0	15.4	16.7	17.9	14.2	14.6	15.8	17.0	13.2	13.5	14.7	15.7	13.2	13.5	14.7	15.7	13.2	13.5	14.7	15.7			
		S/T	0.77	0.68	0.52	0.33	0.79	0.71	0.54	0.35	0.81	0.73	0.55	0.35	0.84	0.75	0.57	0.37	0.87	0.78	0.59	0.38	0.88	0.79	0.59	0.38	0.88	0.79	0.59	0.38	0.88	0.79	0.59	0.38			
	ΔT	22	20	16	11	22	20	16	11	22	20	16	11	22	20	17	11	22	20	16	11	22	20	16	11	22	20	16	11	22	20	16	11				
	KW	1.27	1.30	1.33	1.37	1.36	1.39	1.43	1.47	1.44	1.47	1.51	1.56	1.51	1.54	1.59	1.63	1.57	1.60	1.65	1.70	1.62	1.65	1.70	1.76	1.62	1.65	1.70	1.76	1.62	1.65	1.70	1.76				
	Amps	4.7	4.9	5.0	5.2	5.1	5.2	5.4	5.6	5.5	5.7	5.9	6.1	5.9	6.1	6.2	6.5	6.3	6.4	6.6	6.9	6.6	6.8	7.0	7.3	6.6	6.8	7.0	7.3	6.6	6.8	7.0	7.3				
	HI PR	216	232	245	256	242	260	275	287	275	296	313	326	314	337	356	372	353	380	401	418	390	419	443	462	390	419	443	462	390	419	443	462				
	LO PR	103	109	119	127	108	115	126	134	113	120	131	139	118	126	137	146	124	132	144	153	128	136	149	159	128	136	149	159	128	136	149	159				
	MBh	17.4	17.9	19.4	20.8	17.0	17.5	19.0	20.3	16.6	17.1	18.5	19.9	16.2	16.7	18.1	19.4	15.4	15.8	17.2	18.4	14.3	14.7	15.9	17.1	14.3	14.7	15.9	17.1	14.3	14.7	15.9	17.1				
	S/T	0.79	0.71	0.54	0.35	0.82	0.74	0.56	0.36	0.84	0.75	0.57	0.37	0.87	0.78	0.59	0.38	0.90	0.81	0.61	0.39	0.91	0.82	0.62	0.40	0.91	0.82	0.62	0.40	0.91	0.82	0.62	0.40				
	ΔT	21	20	16	11	21	20	16	11	21	20	16	11	22	20	16	11	21	20	16	11	21	20	16	11	21	20	16	11	21	20	16	11				
KW	1.30	1.33	1.36	1.41	1.39	1.42	1.46	1.51	1.47	1.50	1.55	1.60	1.54	1.58	1.62	1.67	1.60	1.64	1.69	1.74	1.66	1.69	1.74	1.80	1.66	1.69	1.74	1.80	1.66	1.69	1.74	1.80					
Amps	4.9	5.0	5.1	5.3	5.3	5.4	5.5	5.7	5.7	5.8	6.0	6.2	6.1	6.2	6.4	6.7	6.5	6.6	6.8	7.1	6.8	7.0	7.2	7.5	6.8	7.0	7.2	7.5	6.8	7.0	7.2	7.5					
HI PR	222	239	253	264	250	269	284	296	284	305	322	336	323	348	367	383	364	391	413	431	402	432	457	476	402	432	457	476	402	432	457	476					
LO PR	106	112	123	131	112	119	130	138	116	123	135	144	122	130	142	151	128	136	148	158	132	141	153	163	132	141	153	163	132	141	153	163					
MBh	17.9	18.5	20.0	21.5	17.5	18.0	19.5	21.0	17.1	17.6	19.1	20.5	16.7	17.2	18.6	20.0	15.9	16.3	17.7	19.0	14.7	15.1	16.4	17.6	14.7	15.1	16.4	17.6	14.7	15.1	16.4	17.6					
S/T	0.83	0.74	0.56	0.36	0.86	0.77	0.58	0.38	0.88	0.79	0.60	0.39	0.91	0.82	0.62	0.40	0.95	0.85	0.64	0.41	0.96	0.85	0.65	0.42	0.96	0.85	0.65	0.42	0.96	0.85	0.65	0.42					
ΔT	20	19	15	11	21	19	16	11	21	19	16	11	21	19	16	11	20	19	15	11	20	18	14	10	20	18	14	10	20	18	14	10					
KW	1.31	1.34	1.38	1.42	1.40	1.43	1.47	1.52	1.48	1.51	1.56	1.61	1.56	1.59	1.64	1.69	1.62	1.65	1.70	1.75	1.67	1.70	1.76	1.81	1.67	1.70	1.76	1.81	1.67	1.70	1.76	1.81					
Amps	4.9	5.0	5.2	5.4	5.3	5.4	5.6	5.8	5.7	5.9	6.1	6.3	6.1	6.3	6.5	6.7	6.5	6.7	6.9	7.1	6.9	7.1	7.3	7.6	6.9	7.1	7.3	7.6	6.9	7.1	7.3	7.6					
HI PR	225	242	255	266	252	271	286	299	287	308	326	340	326	351	371	387	367	395	417	435	406	437	461	481	406	437	461	481	406	437	461	481					
LO PR	107	114	124	132	113	120	131	139	117	125	136	145	123	131	143	152	129	137	150	160	133	142	155	165	13												

IDB		OUTDOOR AMBIENT TEMPERATURE												105°F												115°F																																																																																																																																																																																																																																																																																																																																																																																																																																																																																																																																																																																																																																																																																																																																																																																																																																																																																																																																																																																																																																																																																																																																																																																																																																																																																																																																																																					
		65°F						75°F						85°F						95°F						105°F						115°F																																																																																																																																																																																																																																																																																																																																																																																																																																																																																																																																																																																																																																																																																																																																																																																																																																																																																																																																																																																																																																																																																																																																																																																																																																																																																																																																																															
		59	63	67	71	75	79	59	63	67	71	75	79	59	63	67	71	75	79	59	63	67	71	75	79	59	63	67	71	75	79	59	63	67	71	75	79																																																																																																																																																																																																																																																																																																																																																																																																																																																																																																																																																																																																																																																																																																																																																																																																																																																																																																																																																																																																																																																																																																																																																																																																																																																																																																																																																										
<b>80</b>	AIRFLOW	59	63	67	71	75	79	83	87	91	95	99	103	107	111	115	119	123	127	131	135	139	143	147	151	155	159	163	167	171	175	179	183	187	191	195	199	203	207	211	215	219	223	227	231	235	239	243	247	251	255	259	263	267	271	275	279	283	287	291	295	299	303	307	311	315	319	323	327	331	335	339	343	347	351	355	359	363	367	371	375	379	383	387	391	395	399	403	407	411	415	419	423	427	431	435	439	443	447	451	455	459	463	467	471	475	479	483	487	491	495	499	503	507	511	515	519	523	527	531	535	539	543	547	551	555	559	563	567	571	575	579	583	587	591	595	599	603	607	611	615	619	623	627	631	635	639	643	647	651	655	659	663	667	671	675	679	683	687	691	695	699	703	707	711	715	719	723	727	731	735	739	743	747	751	755	759	763	767	771	775	779	783	787	791	795	799	803	807	811	815	819	823	827	831	835	839	843	847	851	855	859	863	867	871	875	879	883	887	891	895	899	903	907	911	915	919	923	927	931	935	939	943	947	951	955	959	963	967	971	975	979	983	987	991	995	999	1003	1007	1011	1015	1019	1023	1027	1031	1035	1039	1043	1047	1051	1055	1059	1063	1067	1071	1075	1079	1083	1087	1091	1095	1099	1103	1107	1111	1115	1119	1123	1127	1131	1135	1139	1143	1147	1151	1155	1159	1163	1167	1171	1175	1179	1183	1187	1191	1195	1199	1203	1207	1211	1215	1219	1223	1227	1231	1235	1239	1243	1247	1251	1255	1259	1263	1267	1271	1275	1279	1283	1287	1291	1295	1299	1303	1307	1311	1315	1319	1323	1327	1331	1335	1339	1343	1347	1351	1355	1359	1363	1367	1371	1375	1379	1383	1387	1391	1395	1399	1403	1407	1411	1415	1419	1423	1427	1431	1435	1439	1443	1447	1451	1455	1459	1463	1467	1471	1475	1479	1483	1487	1491	1495	1499	1503	1507	1511	1515	1519	1523	1527	1531	1535	1539	1543	1547	1551	1555	1559	1563	1567	1571	1575	1579	1583	1587	1591	1595	1599	1603	1607	1611	1615	1619	1623	1627	1631	1635	1639	1643	1647	1651	1655	1659	1663	1667	1671	1675	1679	1683	1687	1691	1695	1699	1703	1707	1711	1715	1719	1723	1727	1731	1735	1739	1743	1747	1751	1755	1759	1763	1767	1771	1775	1779	1783	1787	1791	1795	1799	1803	1807	1811	1815	1819	1823	1827	1831	1835	1839	1843	1847	1851	1855	1859	1863	1867	1871	1875	1879	1883	1887	1891	1895	1899	1903	1907	1911	1915	1919	1923	1927	1931	1935	1939	1943	1947	1951	1955	1959	1963	1967	1971	1975	1979	1983	1987	1991	1995	1999	2003	2007	2011	2015	2019	2023	2027	2031	2035	2039	2043	2047	2051	2055	2059	2063	2067	2071	2075	2079	2083	2087	2091	2095	2099	2103	2107	2111	2115	2119	2123	2127	2131	2135	2139	2143	2147	2151	2155	2159	2163	2167	2171	2175	2179	2183	2187	2191	2195	2199	2203	2207	2211	2215	2219	2223	2227	2231	2235	2239	2243	2247	2251	2255	2259	2263	2267	2271	2275	2279	2283	2287	2291	2295	2299	2303	2307	2311	2315	2319	2323	2327	2331	2335	2339	2343	2347	2351	2355	2359	2363	2367	2371	2375	2379	2383	2387	2391	2395	2399	2403	2407	2411	2415	2419	2423	2427	2431	2435	2439	2443	2447	2451	2455	2459	2463	2467	2471	2475	2479	2483	2487	2491	2495	2499	2503	2507	2511	2515	2519	2523	2527	2531	2535	2539	2543	2547	2551	2555	2559	2563	2567	2571	2575	2579	2583	2587	2591	2595	2599	2603	2607	2611	2615	2619	2623	2627	2631	2635	2639	2643	2647	2651	2655	2659	2663	2667	2671	2675	2679	2683	2687	2691	2695	2699	2703	2707	2711	2715	2719	2723	2727	2731	2735	2739	2743	2747	2751	2755	2759	2763	2767	2771	2775	2779	2783	2787	2791	2795	2799	2803	2807	2811	2815	2819	2823	2827	2831	2835	2839	2843	2847	2851	2855	2859	2863	2867	2871	2875	2879	2883	2887	2891	2895	2899	2903	2907	2911	2915	2919	2923	2927	2931	2935	2939	2943	2947	2951	2955	2959	2963	2967	2971	2975	2979	2983	2987	2991	2995	2999	3003	3007	3011	3015	3019	3023	3027	3031	3035	3039	3043	3047	3051	3055	3059	3063	3067	3071	3075	3079	3083	3087	3091	3095	3099	3103	3107	3111	3115	3119	3123	3127	3131	3135	3139	3143	3147	3151	3155	3159	3163	3167	3171	3175	3179	3183	3187	3191	3195	3199	3203	3207	3211	3215	3219	3223	3227	3231	3235	3239	3243	3247	3251	3255	3259	3263	3267	3271	3275	3279	3283	3287	3291	3295	3299	3303	3307	3311	3315	3319	3323	3327	3331	3335	3339	3343	3347	3351	3355	3359	3363	3367	3371	3375	3379	3383	3387	3391	3395	3399	3403	3407	3411	3415	3419	3423	3427	3431	3435	3439	3443	3447	3451	3455	3459	3463	3467	3471	3475	3479	3483	3487	3491	3495	3499	3503	3507	3511	3515	3519	3523	3527	3531	3535	3539	3543	3547	3551	3555	3559	3563	3567	3571	3575	3579	3583	3587	3591	3595	3599	3603	3607	3611	3615	3619	3623	3627	3631	3635	3639	3643	3647	3651	3655	3659	3663	3667	3671	3675	3679	3683	3687	3691	3695	3699	3703	3707	3711	3715	3719	3723	3727	3731	3735	3739	3743	3747	3751	3755	3759	3763	3767	3771	3775	3779	3783	3787	3791	3795	3799	3803	3807	3811	3815	3819	3823	3827	3831	3835	3839	3843	3847	3851	3855	3859	3863	3867	3871	3875	3879	3883	3887	3891	3895	3899	3903	3907	3911	3915	3919	3923	3927	3931	3935	3939	3943	3947	3951	3955	3959	3963	3967	3971	3975	3979	3983	3987	3991	3995	3999	4003	4007	4011	4015	4019	4023	4027	4031	4035	4039	4043	4047	4051	4055	4059	4063	4067	4071	4075	4079	4083	4087	4091	4095	4099	4103	4107	4111	4115	4119	4123	4127	4131	4135	4139	4143	4147	4151	4155	4159	4163	4167	4171	4175	4179	4183	4187	4191	4195	4199	4203	4207	4211	4215	4219	4223	4227	4231	4235	4239	4243	4247	4251	4255	4259	4263	4267	4271	4275	4279	4283	4287	4291	4295	4299	4303	4307	4311	4315	4319	4323	4327	4331	4335	4339	4343	4347	4351	4355	4359	4363	4367	4371	4375	4379	4383	4387	4391	4395	4399	4403	4407	4411	4415	4419	4423	4427	4431	4435	4439	4443	4447	4451	4455	4459	4463	4467	4471	4475	4479	4483	4487	4491	4495	4499	4503	4507	4511	4515	4519	4523	4527	4531	4535	4539	4543	4547	4551	4555	4559	4563	4567	4571	4575	4579	4583	4587	4591	4595	4599	4603	4607	4611	4615	4619	4623	4627	4631	4635	4639	4643	4647	4651	4655	4659	4663	4667	4671	4675	4679	4683	4687	4691	4695	4699	4703	4707	4711	4715	4719	4723	4727	4731	4735	4739	4743	4747	4751	4755	4759	4763	4767	4771	4775	4779	4783	4787	4791	4795	4799	4803	4807	4811	4815	4819	4823	4827	4831	4835	4839	4843	4847	4851	4855	4859	4863	4867	4871	4875	4879	4883	4887	4891	4895	4899	4903	4907	4911	4915	4919	4923	4927	4931	4935	4939	4943	4947	4951	4955	4959	4963	4967	4971	4975	4979	4983	4987	4991	4995	4999	5003	5007	5011	5015	5019	5023	5027	5031	5035	5039	5043	5047	5051	5055	5059	5063	5067	5071	5075	5079	5083	5087	5091	5095	5099	5103	5107	5111	5115	5119	5123	5127	5131	5135	5139	5143	5147	5151	5155	5159	5163	5167	5171	5175	5179	5183	5187	5191	5195	5199	5203	5207	5211	5215	5219	5223	5227	5231	5235	5239	5243	5247	5251	5255	5259	5263	5267	5271	5275	5279	5283	5287	5291	5295	5299	5303	5307	5311	5315	5319	5323	5327	5331	5335	5339	5343	5347	5351	5355	5359	5363	5367	5371	5375	5379	5383	5387	5391	5395	5399	5403	5407	5411	5415	5419	542

IDB		OUTDOOR AMBIENT TEMPERATURE																							
		65°F				75°F				85°F				95°F				105°F				115°F			
		59	63	67	71	59	63	67	71	59	63	67	71	59	63	67	71	59	63	67	71	59	63	67	71
525		15.6	16.2	17.7	-	15.3	15.8	17.3	-	14.9	15.4	16.9	-	14.5	15.1	16.5	-	13.8	14.3	15.7	-	13.3	13.8	15.2	-
600		0.73	0.61	0.42	-	0.76	0.63	0.44	-	0.78	0.65	0.45	-	0.80	0.67	0.46	-	0.83	0.70	0.48	-	0.84	0.70	0.49	-
650		20	17	13	-	20	18	13	-	20	18	13	-	20	18	13	-	20	17	13	-	19	16	12	-
70		0.98	1.01	1.04	-	1.07	1.09	1.13	-	1.14	1.17	1.21	-	1.21	1.24	1.28	-	1.26	1.30	1.34	-	1.31	1.34	1.39	-
525		3.9	4.0	4.2	-	4.3	4.4	4.5	-	4.7	4.8	5.0	-	5.0	5.2	5.4	-	5.4	5.5	5.7	-	5.7	5.9	6.1	-
600		208	224	236	-	233	251	265	-	265	285	301	-	302	325	343	-	340	366	386	-	375	404	427	-
650		104	111	121	-	110	117	127	-	114	121	133	-	120	127	139	-	126	134	146	-	130	138	151	-
70		16.4	17.0	18.7	-	16.0	16.6	18.2	-	15.7	16.2	17.8	-	15.3	15.8	17.4	-	14.5	15.0	16.5	-	13.4	13.9	15.3	-
525		0.74	0.62	0.43	-	0.77	0.64	0.45	-	0.79	0.66	0.46	-	0.82	0.68	0.47	-	0.85	0.71	0.49	-	0.85	0.71	0.49	-
600		19	16	12	-	19	16	12	-	19	16	13	-	19	17	13	-	19	16	12	-	18	15	12	-
650		1.00	1.02	1.05	-	1.08	1.11	1.15	-	1.16	1.18	1.23	-	1.22	1.25	1.30	-	1.28	1.31	1.36	-	1.33	1.36	1.41	-
70		4.0	4.1	4.2	-	4.3	4.4	4.6	-	4.7	4.9	5.0	-	5.1	5.2	5.4	-	5.5	5.6	5.8	-	5.8	6.0	6.2	-
525		211	227	239	-	236	254	269	-	269	289	305	-	306	329	348	-	344	371	391	-	380	409	432	-
600		105	112	122	-	111	118	129	-	116	123	134	-	121	129	141	-	127	135	148	-	132	140	153	-
650		16.9	17.6	19.2	-	16.5	17.1	18.8	-	16.1	16.7	18.3	-	15.8	16.3	17.9	-	15.0	15.5	17.0	-	13.9	14.4	15.7	-
70		0.76	0.63	0.44	-	0.79	0.66	0.45	-	0.81	0.67	0.47	-	0.83	0.70	0.48	-	0.86	0.72	0.50	-	0.87	0.73	0.50	-
525		18	16	12	-	18	16	12	-	18	16	12	-	19	16	12	-	18	16	12	-	17	15	11	-
600		1.01	1.03	1.07	-	1.10	1.12	1.16	-	1.17	1.20	1.25	-	1.24	1.27	1.32	-	1.30	1.33	1.38	-	1.35	1.38	1.43	-
650		4.0	4.2	4.3	-	4.4	4.5	4.7	-	4.8	5.0	5.1	-	5.2	5.3	5.5	-	5.5	5.7	5.9	-	5.9	6.1	6.3	-
70		214	231	243	-	240	259	273	-	273	294	311	-	311	335	354	-	350	377	398	-	387	417	440	-
525		107	114	124	-	113	120	131	-	118	125	137	-	124	131	143	-	129	138	150	-	134	142	156	-

IDB		OUTDOOR AMBIENT TEMPERATURE																							
		65°F				75°F				85°F				95°F				105°F				115°F			
		59	63	67	71	59	63	67	71	59	63	67	71	59	63	67	71	59	63	67	71	59	63	67	71
525		15.9	16.4	17.7	19.0	15.5	16.0	17.3	18.6	15.2	15.6	16.9	18.1	14.8	15.2	16.5	17.7	14.0	14.5	15.7	16.8	13.0	13.4	14.5	15.6
600		0.83	0.74	0.56	0.36	0.86	0.77	0.58	0.38	0.88	0.79	0.60	0.38	0.91	0.82	0.62	0.40	0.95	0.85	0.64	0.41	0.95	0.85	0.65	0.42
650		23	21	18	12	23	22	18	12	24	22	18	12	24	22	18	12	23	21	18	12	22	20	16	11
70		0.99	1.02	1.05	1.09	1.08	1.10	1.14	1.18	1.15	1.18	1.22	1.27	1.22	1.25	1.29	1.34	1.28	1.31	1.35	1.40	1.32	1.36	1.41	1.46
525		4.0	4.1	4.2	4.4	4.3	4.4	4.6	4.8	4.7	4.9	5.0	5.2	5.1	5.2	5.4	5.6	5.4	5.6	5.8	6.0	5.8	5.9	6.2	6.4
600		210	226	239	249	236	253	268	279	268	288	304	318	305	328	347	362	343	369	390	407	379	408	431	450
650		105	112	122	130	111	118	129	137	115	123	134	143	121	129	141	150	127	135	147	157	131	140	152	162
70		16.7	17.2	18.6	20.0	16.3	16.8	18.2	19.5	15.9	16.4	17.8	19.1	15.5	16.0	17.3	18.6	14.8	15.2	16.5	17.7	13.7	14.1	15.2	16.4
525		0.84	0.76	0.57	0.37	0.88	0.78	0.59	0.38	0.90	0.80	0.61	0.39	0.93	0.83	0.63	0.40	0.96	0.86	0.65	0.42	0.97	0.87	0.66	0.42
600		22	20	16	11	22	20	17	11	22	20	17	11	22	20	17	11	22	20	16	11	20	19	15	11
650		1.00	1.03	1.06	1.10	1.09	1.12	1.16	1.20	1.17	1.20	1.24	1.28	1.23	1.26	1.31	1.36	1.29	1.32	1.37	1.42	1.34	1.37	1.42	1.48
70		4.0	4.1	4.3	4.4	4.4	4.5	4.7	4.8	4.8	4.9	5.1	5.3	5.2	5.3	5.5	5.7	5.5	5.7	5.9	6.1	5.9	6.0	6.2	6.5
525		213	229	242	252	239	257	271	283	271	292	309	322	309	333	351	366	348	374	395	412	384	414	437	456
600		106	113	124	132	112	120	131	139	117	124	136	144	123	131	142	152	129	137	149	159	133	141	154	164
650		17.2	17.7	19.2	20.6	16.8	17.3	18.7	20.1	16.4	16.9	18.3	19.6	16.0	16.5	17.9	19.2	15.2	15.7	17.0	18.2	14.1	14.5	15.7	16.9
70		0.86	0.77	0.58	0.38	0.89	0.80	0.61	0.39	0.92	0.82	0.62	0.40	0.95	0.85	0.64	0.41	0.98	0.88	0.66	0.43	0.99	0.89	0.67	0.43
525		21	19	16	11	21	20	16	11	21	20	16	11	21	20	16	11	21	20	16	11	20	18	15	10
600		1.02	1.04	1.08	1.12	1.11	1.13	1.17	1.22	1.19	1.21	1.26	1.30	1.25	1.28	1.33	1.38	1.31	1.34	1.39	1.44	1.36	1.40	1.45	1.50
650		4.1	4.2	4.3	4.5	4.5	4.6	4.7	4.9	4.9	5.0	5.2	5.4	5.2	5.4	5.6	5.8	5.6	5.8	6.0	6.2	6.0	6.1	6.3	6.6
70		216	233	246	257	243	261	276	288	276	297	314	327	315	339	357	373	354	381	402	419	391	421	444	463
525		108	115	126	134	114	122	133	141	119	126	138	147	125	133	145	154	131	139	152	162	135	144	157	167

IDB: Entering Indoor Dry Bulb Temperature  
 High and low pressures are measured at the liquid and suction service valves.  
 Shaded area reflects ACCA (TVA) conditions  
 kW = Total system power  
 Amps = outdoor unit amps (comp.+fan)

IDB		OUTDOOR AMBIENT TEMPERATURE												ENTERING INDOOR WET BULB TEMPERATURE											
		65°F				75°F				85°F				95°F				105°F				115°F			
		59	63	67	71	59	63	67	71	59	63	67	71	59	63	67	71	59	63	67	71	59	63	67	71
525	AIRFLOW	16.2	16.5	17.7	18.9	15.8	16.1	17.3	18.4	15.4	15.8	16.8	18.0	15.0	15.4	16.4	17.6	14.3	14.6	15.6	16.7	13.2	13.5	14.5	15.5
	MBh	0.91	0.86	0.70	0.5	0.95	0.89	0.72	0.54	0.97	0.91	0.74	0.6	1.00	0.94	0.76	0.57	1.04	0.97	0.79	0.6	1.05	0.98	0.80	0.60
	S/T	26	25	22	17	26	25	22	17	26	25	22	17	26	25	22	18	26	25	22	17	24	23	20	16
	ΔT	1.00	1.02	1.06	1.1	1.09	1.11	1.15	1.19	1.16	1.19	1.23	1.3	1.23	1.26	1.31	1.35	1.29	1.32	1.37	1.4	1.34	1.37	1.42	1.47
	kW	4.0	4.1	4.3	4.4	4.4	4.5	4.6	4.8	4.8	4.9	5.1	5.3	5.1	5.3	5.5	5.7	5.5	5.6	5.8	6.1	5.8	6.0	6.2	6.5
	Amps	212	228	241	251.0	238	256	270	282	271	291	308	321.0	308	332	350	365	347	373	394	411.0	383	412	435	454
	HI PR	106	113	123	131.0	112	119	130	139	116	124	135	144.0	122	130	142	151	128	136	149	159.0	133	141	154	164
	LO PR	17.0	17.4	18.6	19.8	16.6	17.0	18.1	19.4	16.2	16.6	17.7	18.9	15.8	16.2	17.3	18.5	15.0	15.4	16.4	17.5	13.9	14.2	15.2	16.2
	MBh	0.93	0.87	0.71	0.5	0.96	0.90	0.73	0.55	0.98	0.92	0.75	0.6	1.00	0.95	0.78	0.58	1.00	0.99	0.81	0.6	1.00	1.00	0.81	0.61
	S/T	24	23	20	16	24	23	20	16	25	23	20	16	24	24	21	16	23	23	20	16	21	22	19	15
ΔT	1.01	1.04	1.07	1.1	1.10	1.13	1.17	1.21	1.18	1.21	1.25	1.3	1.25	1.28	1.32	1.37	1.30	1.34	1.38	1.4	1.35	1.39	1.44	1.49	
kW	4.1	4.2	4.3	4.5	4.4	4.5	4.7	4.9	4.8	5.0	5.1	5.4	5.2	5.3	5.5	5.8	5.6	5.7	5.9	6.2	5.9	6.1	6.3	6.6	
Amps	215	231	244	255.0	241	259	274	286	274	295	312	325.0	312	336	355	370	351	378	399	416.0	388	418	441	460	
HI PR	107	114	125	133.0	114	121	132	140	118	126	137	146.0	124	132	144	153	130	138	151	161.0	134	143	156	166	
LO PR	17.5	17.9	19.1	20.5	17.1	17.5	18.7	20.0	16.7	17.1	18.2	19.5	16.3	16.7	17.8	19.0	15.5	15.8	16.9	18.1	14.3	14.7	15.7	16.7	
MBh	0.95	0.89	0.72	0.5	1.00	0.92	0.75	0.56	1.00	0.94	0.77	0.6	1.00	1.00	0.79	0.59	1.00	1.00	0.82	0.6	1.00	1.00	0.83	0.62	
S/T	24	23	20	16	24	23	20	16	24	23	20	16	23	24	20	16	22	22	20	16	20	21	18	15	
ΔT	1.03	1.05	1.09	1.1	1.12	1.14	1.19	1.23	1.20	1.23	1.27	1.3	1.27	1.30	1.34	1.39	1.32	1.36	1.41	1.5	1.37	1.41	1.46	1.51	
kW	4.1	4.2	4.4	4.6	4.5	4.6	4.8	5.0	4.9	5.1	5.2	5.5	5.3	5.4	5.6	5.9	5.7	5.8	6.0	6.3	6.0	6.2	6.4	6.7	
Amps	219	235	248	259.0	245	264	279	291	279	300	317	331.0	318	342	361	377	357	385	406	424.0	395	425	449	468	
HI PR	109	116	127	135.0	115	123	134	143	120	128	139	148.0	126	134	146	156	132	141	153	163.0	137	145	159	169	
LO PR	16.5	16.8	17.6	18.7	16.1	16.4	17.2	18.3	15.7	16.0	16.8	17.9	15.3	15.6	16.3	17.4	14.5	14.8	15.5	16.6	13.5	13.7	14.4	15.3	
MBh	0.96	0.92	0.83	0.68	0.99	0.96	0.86	0.70	1.00	0.98	0.88	0.72	1.00	1.00	0.91	0.74	1.00	1.00	0.95	0.77	1.00	1.00	0.96	0.78	
S/T	28	27	26	22	28	27	26	23	28	28	26	23	27	27	26	23	26	26	26	22	24	24	24	21	
ΔT	1.01	1.03	1.07	1.11	1.10	1.12	1.16	1.21	1.17	1.20	1.25	1.29	1.24	1.27	1.32	1.37	1.30	1.33	1.38	1.43	1.35	1.38	1.43	1.49	
kW	4.0	4.2	4.3	4.5	4.4	4.5	4.7	4.9	4.8	5.0	5.1	5.3	5.2	5.3	5.5	5.7	5.5	5.7	5.9	6.1	5.9	6.1	6.3	6.5	
Amps	214	230	243	254	240	259	273	285	273	294	311	324	311	335	354	369	350	377	398	415	387	416	440	459	
HI PR	107	114	124	132	113	120	131	140	118	125	137	145	124	131	143	153	129	138	150	160	134	142	155	166	
LO PR	17.3	17.6	18.5	19.7	16.9	17.2	18.0	19.2	16.5	16.8	17.6	18.8	16.1	16.4	17.2	18.3	15.3	15.6	16.3	17.4	14.2	14.4	15.1	16.1	
MBh	0.97	0.94	0.85	0.69	1.00	0.97	0.88	0.71	1.00	1.00	0.90	0.73	1.00	1.00	0.93	0.75	1.00	1.00	0.96	0.78	1.00	1.00	0.97	0.79	
S/T	26	25	24	21	26	26	24	21	25	26	24	21	25	25	24	21	23	24	24	21	22	22	23	20	
ΔT	1.02	1.05	1.08	1.12	1.11	1.14	1.18	1.22	1.19	1.22	1.26	1.31	1.26	1.29	1.33	1.38	1.32	1.35	1.40	1.45	1.37	1.40	1.45	1.50	
kW	4.1	4.2	4.4	4.5	4.5	4.6	4.7	4.9	4.9	5.0	5.2	5.4	5.3	5.4	5.6	5.8	5.6	5.8	6.0	6.2	6.0	6.1	6.4	6.6	
Amps	217	234	247	257	244	262	277	289	277	298	315	328	315	339	358	374	355	382	403	421	392	422	446	465	
HI PR	109	115	126	134	115	122	133	142	119	127	138	147	125	133	145	155	131	140	152	162	136	144	158	168	
LO PR	17.8	18.2	19.0	20.3	17.4	17.8	18.6	19.8	17.0	17.3	18.2	19.4	16.6	16.9	17.7	18.9	15.8	16.1	16.8	18.0	14.6	14.9	15.6	16.6	
MBh	0.99	0.96	0.86	0.70	1.00	0.99	0.89	0.73	1.00	1.00	0.92	0.74	1.00	1.00	0.95	0.77	1.00	1.00	0.98	0.80	1.00	1.00	0.99	0.80	
S/T	25	25	23	20	25	25	24	20	24	25	24	20	24	24	24	21	22	23	23	20	21	21	22	19	
ΔT	1.04	1.06	1.10	1.14	1.13	1.15	1.20	1.24	1.21	1.24	1.28	1.33	1.28	1.31	1.36	1.41	1.34	1.37	1.42	1.47	1.39	1.42	1.47	1.53	
kW	4.2	4.3	4.4	4.6	4.5	4.7	4.8	5.0	5.0	5.1	5.3	5.5	5.3	5.5	5.7	5.9	5.7	5.9	6.1	6.3	6.1	6.2	6.5	6.7	
Amps	221	238	251	262	248	267	282	294	282	303	320	334	321	345	365	380	361	389	410	428	399	429	453	473	
HI PR	110	117	128	137	117	124	135	144	121	129	141	150	127	135	148	157	133	142	155	165	138	147	160	171	
LO PR	17.1	17.4	18.1	19.1	16.7	17.1	18.1	19.4	16.2	16.6	17.7	18.9	15.8	16.2	17.3	18.5	15.0	15.4	16.4	17.5	13.9	14.2	15.2	16.2	

IDB: Entering Indoor Dry Bulb Temperature  
 High and low pressures are measured at the liquid and suction service valves.  
 Shaded area reflects AHRI conditions  
 kW = Total system power  
 Amps = outdoor unit amps (comp.+fan)

IDB	AIRFLOW	OUTDOOR AMBIENT TEMPERATURE												ENTERING INDOOR WET BULB TEMPERATURE											
		65°F				75°F				85°F				95°F				105°F				115°F			
		59	63	67	71	59	63	67	71	59	63	67	71	59	63	67	71	59	63	67	71	59	63	67	71
70	MBh	20.2	20.9	22.9	-	19.7	20.4	22.4	-	19.3	20.0	21.9	-	18.8	19.5	21.3	-	17.8	18.5	20.3	-	16.5	17.1	18.8	-
	S/T	0.68	0.57	0.40	-	0.71	0.59	0.41	-	0.73	0.61	0.42	-	0.75	0.63	0.43	-	0.78	0.65	0.45	-	0.79	0.66	0.45	-
	ΔT	18	16	12	-	18	16	12	-	18	16	12	-	19	16	12	-	18	16	12	-	17	15	11	-
	kW	1.60	1.64	1.68	-	1.72	1.75	1.81	-	1.82	1.86	1.91	-	1.91	1.95	2.01	-	1.98	2.03	2.09	-	2.05	2.09	2.16	-
	Amps	5.9	6.0	6.2	-	6.4	6.5	6.7	-	6.9	7.1	7.3	-	7.4	7.6	7.8	-	7.9	8.1	8.4	-	8.4	8.6	8.9	-
	HI PR	222	239	253	-	249	268	283	-	284	305	322	-	323	348	367	-	364	391	413	-	402	432	456	-
LO PR	100	106	116	-	106	112	123	-	110	117	128	-	115	123	134	-	121	129	140	-	125	133	145	-	
800	MBh	21.9	22.7	24.8	-	21.4	22.2	24.3	-	20.9	21.6	23.7	-	20.4	21.1	23.1	-	19.3	20.0	22.0	-	17.9	18.6	20.3	-
	S/T	0.71	0.59	0.41	-	0.74	0.61	0.43	-	0.75	0.63	0.44	-	0.78	0.65	0.45	-	0.81	0.67	0.47	-	0.81	0.68	0.47	-
	ΔT	18	15	12	-	18	16	12	-	18	16	12	-	18	16	12	-	18	16	12	-	17	15	11	-
	kW	1.64	1.67	1.72	-	1.76	1.79	1.85	-	1.86	1.90	1.96	-	1.95	2.00	2.06	-	2.03	2.08	2.14	-	2.10	2.14	2.21	-
	Amps	6.1	6.2	6.4	-	6.6	6.7	6.9	-	7.1	7.3	7.5	-	7.6	7.8	8.1	-	8.1	8.3	8.6	-	8.6	8.8	9.1	-
	HI PR	229	247	260	-	257	277	292	-	293	315	332	-	333	359	379	-	375	403	426	-	414	446	471	-
LO PR	103	110	120	-	109	116	127	-	113	120	132	-	119	127	138	-	125	133	145	-	129	137	150	-	
900	MBh	22.5	23.4	25.6	-	22.0	22.8	25.0	-	21.5	22.3	24.4	-	21.0	21.7	23.8	-	19.9	20.6	22.6	-	18.4	19.1	21.0	-
	S/T	0.74	0.62	0.43	-	0.77	0.64	0.45	-	0.79	0.66	0.46	-	0.82	0.68	0.47	-	0.85	0.71	0.49	-	0.85	0.71	0.49	-
	ΔT	17	15	11	-	17	15	11	-	17	15	11	-	17	15	11	-	17	15	11	-	16	14	11	-
	kW	1.65	1.69	1.74	-	1.77	1.81	1.86	-	1.88	1.92	1.97	-	1.97	2.01	2.07	-	2.05	2.09	2.16	-	2.12	2.16	2.23	-
	Amps	6.1	6.3	6.5	-	6.6	6.8	7.0	-	7.2	7.4	7.6	-	7.7	7.9	8.2	-	8.2	8.4	8.7	-	8.7	8.9	9.2	-
	HI PR	231	249	263	-	260	280	295	-	295	318	336	-	336	362	382	-	379	407	430	-	418	450	475	-
LO PR	104	111	121	-	110	117	128	-	114	122	133	-	120	128	140	-	126	134	146	-	130	139	151	-	

IDB	AIRFLOW	OUTDOOR AMBIENT TEMPERATURE												ENTERING INDOOR WET BULB TEMPERATURE											
		65°F				75°F				85°F				95°F				105°F				115°F			
		59	63	67	71	59	63	67	71	59	63	67	71	59	63	67	71	59	63	67	71	59	63	67	71
700	MBh	20.5	21.1	22.9	24.6	20.1	20.7	22.4	24.0	19.6	20.2	21.8	23.4	19.1	19.7	21.3	22.9	18.2	18.7	20.2	21.7	16.8	17.3	18.7	20.1
	S/T	0.78	0.70	0.53	0.34	0.81	0.72	0.55	0.35	0.83	0.74	0.56	0.36	0.85	0.76	0.58	0.37	0.89	0.79	0.60	0.39	0.89	0.80	0.60	0.39
	ΔT	21	19	16	11	21	20	16	11	21	20	16	11	21	20	16	11	21	19	16	11	20	18	15	10
	kW	1.62	1.65	1.70	1.75	1.73	1.77	1.82	1.88	1.83	1.87	1.93	1.99	1.92	1.96	2.02	2.09	2.00	2.04	2.11	2.17	2.07	2.11	2.18	2.25
	Amps	6.0	6.1	6.3	6.5	6.4	6.6	6.8	7.1	7.0	7.2	7.4	7.7	7.5	7.7	7.9	8.2	8.0	8.2	8.4	8.8	8.4	8.7	8.9	9.3
	HI PR	225	242	255	266	252	271	286	299	287	308	326	340	326	351	371	387	367	395	417	435	406	437	461	481
LO PR	101	108	117	125	107	114	124	132	111	118	129	137	117	124	135	144	122	130	142	151	126	134	147	156	
800	MBh	22.3	22.9	24.8	26.6	21.7	22.4	24.2	26.0	21.2	21.8	23.6	25.4	20.7	21.3	23.1	24.8	19.7	20.2	21.9	23.5	18.2	18.8	20.3	21.8
	S/T	0.81	0.72	0.55	0.35	0.84	0.75	0.57	0.36	0.86	0.77	0.58	0.37	0.89	0.79	0.60	0.39	0.92	0.82	0.62	0.40	0.93	0.83	0.63	0.40
	ΔT	21	19	16	11	21	19	16	11	21	19	16	11	21	19	16	11	21	19	16	11	19	18	15	10
	kW	1.65	1.69	1.74	1.79	1.77	1.81	1.86	1.92	1.88	1.92	1.98	2.04	1.97	2.01	2.07	2.14	2.05	2.09	2.16	2.23	2.12	2.16	2.23	2.30
	Amps	6.1	6.3	6.5	6.7	6.6	6.8	7.0	7.3	7.2	7.4	7.6	7.9	7.7	7.9	8.2	8.5	8.2	8.4	8.7	9.0	8.7	8.9	9.2	9.6
	HI PR	232	249	263	274	260	280	295	308	295	318	336	350	337	362	382	399	379	407	430	449	418	450	475	496
LO PR	104	111	121	129	110	117	128	136	114	122	133	142	120	128	140	149	126	134	146	156	130	139	151	161	
900	MBh	22.9	23.6	25.5	27.4	22.4	23.0	24.9	26.8	21.9	22.5	24.4	26.1	21.3	22.0	23.8	25.5	20.3	20.9	22.6	24.2	18.8	19.3	20.9	22.4
	S/T	0.85	0.76	0.57	0.37	0.88	0.78	0.59	0.38	0.90	0.80	0.61	0.39	0.93	0.83	0.63	0.40	0.96	0.86	0.65	0.42	0.97	0.87	0.66	0.42
	ΔT	20	18	15	10	20	18	15	10	20	18	15	10	20	19	15	11	20	18	15	10	19	17	14	10
	kW	1.67	1.70	1.75	1.80	1.79	1.82	1.88	1.94	1.89	1.93	1.99	2.05	1.99	2.03	2.09	2.16	2.07	2.11	2.18	2.25	2.13	2.18	2.25	2.32
	Amps	6.2	6.3	6.5	6.8	6.7	6.8	7.1	7.3	7.3	7.4	7.7	8.0	7.8	8.0	8.2	8.5	8.3	8.5	8.8	9.1	8.8	9.0	9.3	9.7
	HI PR	234	252	266	277	262	282	298	311	298	321	339	354	340	366	386	403	382	412	435	453	423	455	480	501
LO PR	105	112	122	130	111	118	129	138	116	123	134	143	121	129	141	150	127	135	148	157	132	140	153	163	

IDB: Entering Indoor Dry Bulb Temperature  
 High and low pressures are measured at the liquid and suction service valves.  
 Shaded area reflects ACCA (TVA) conditions  
 kW = Total system power  
 Amps = outdoor unit amps (comp.+fan)



IDB	AIRFLOW	OUTDOOR AMBIENT TEMPERATURE												ENTERING INDOOR WET BULB TEMPERATURE											
		65°F				75°F				85°F				95°F				105°F				115°F			
		59	63	67	71	59	63	67	71	59	63	67	71	59	63	67	71	59	63	67	71	59	63	67	71
80	MBh	20.9	21.4	22.8	24.4	20.4	20.9	22.3	23.8	19.9	20.4	21.8	23.3	19.4	19.9	21.2	22.7	18.5	18.9	20.2	21.6	17.1	17.5	18.7	20.0
	S/T	0.85	0.80	0.65	0.5	0.88	0.83	0.68	0.50	0.91	0.85	0.69	0.5	0.94	0.88	0.71	0.53	0.97	0.91	0.74	0.6	0.98	0.92	0.75	0.56
	ΔT	23	22	20	16	24	23	20	16	24	23	20	16	24	23	20	16	24	23	20	16	22	21	18	15
	kW	1.63	1.66	1.71	1.8	1.74	1.78	1.83	1.89	1.85	1.89	1.94	2.0	1.94	1.98	2.04	2.11	2.02	2.06	2.12	2.2	2.08	2.13	2.19	2.27
	Amps	6.0	6.2	6.4	6.6	6.5	6.7	6.9	7.1	7.1	7.2	7.5	7.8	7.6	7.7	8.0	8.3	8.0	8.2	8.5	8.8	8.5	8.7	9.0	9.4
	HI PR	227	244	258	268.9	255	274	289	302	290	312	329	343.1	330	355	375	391	371	399	422	439.7	410	441	466	486
	LO PR	102	109	119	126.3	108	115	125	133	112	119	130	138.7	118	125	137	146	123	131	143	152.7	128	136	148	158
	MBh	22.6	23.1	24.7	26.4	22.1	22.6	24.2	25.8	21.6	22.1	23.6	25.2	21.1	21.5	23.0	24.6	20.0	20.5	21.9	23.4	18.5	18.9	20.2	21.6
	S/T	0.88	0.83	0.68	0.5	0.92	0.86	0.70	0.52	0.94	0.88	0.72	0.5	0.97	0.91	0.74	0.55	1.00	0.94	0.77	0.6	1.00	0.95	0.78	0.58
	ΔT	23	22	19	15	23	22	19	16	23	22	19	16	24	23	20	16	23	22	19	15	21	21	18	14
kW	1.67	1.70	1.75	1.8	1.79	1.82	1.88	1.94	1.89	1.93	1.99	2.1	1.99	2.03	2.09	2.16	2.07	2.11	2.18	2.2	2.13	2.18	2.25	2.32	
Amps	6.2	6.3	6.5	6.8	6.7	6.8	7.1	7.3	7.3	7.3	7.4	7.7	7.8	8.0	8.2	8.5	8.3	8.5	8.8	9.1	8.8	9.0	9.3	9.7	
HI PR	234	252	266	277.2	262	282	298	311	298	321	339	353.8	340	366	386	403	382	412	435	453.3	423	455	480	501	
LO PR	105	112	122	130.2	111	118	129	138	116	123	134	143.0	121	129	141	150	127	135	148	157.4	132	140	153	163	
MBh	23.3	23.8	25.5	27.2	22.8	23.3	24.9	26.6	22.2	22.7	24.3	26.0	21.7	22.2	23.7	25.3	20.6	21.1	22.5	24.1	19.1	19.5	20.8	22.3	
S/T	0.93	0.87	0.71	0.5	0.96	0.90	0.73	0.55	1.00	0.92	0.75	0.6	1.00	0.95	0.78	0.58	1.00	1.00	0.81	0.6	1.00	1.00	0.81	0.61	
ΔT	22	21	18	15	22	21	19	15	23	21	19	15	22	22	19	15	21	22	19	15	20	20	17	14	
kW	1.68	1.71	1.76	1.8	1.80	1.84	1.89	1.95	1.91	1.95	2.01	2.1	2.00	2.04	2.11	2.17	2.08	2.13	2.19	2.3	2.15	2.20	2.27	2.34	
Amps	6.2	6.4	6.6	6.8	6.7	6.9	7.1	7.4	7.3	7.5	7.8	8.1	7.8	8.0	8.3	8.6	8.3	8.6	8.8	9.2	8.9	9.1	9.4	9.7	
HI PR	236	254	268	280.0	265	285	301	314	301	324	343	357.3	343	369	390	407	386	416	439	457.8	427	459	485	506	
LO PR	106	113	123	131.5	112	119	130	139	117	124	136	144.4	123	130	142	152	129	137	149	158.9	133	141	154	164	
85	MBh	21.3	21.7	22.7	24.2	20.8	21.2	22.2	23.7	20.3	20.7	21.7	23.1	19.8	20.2	21.1	22.5	18.8	19.2	20.1	21.4	17.4	17.7	18.6	19.8
	S/T	0.89	0.86	0.78	0.63	0.93	0.89	0.81	0.65	0.95	0.92	0.83	0.67	0.98	0.95	0.85	0.69	1.00	0.98	0.89	0.72	1.00	0.99	0.89	0.73
	ΔT	25	25	23	20	25	25	24	20	25	25	24	20	25	25	24	21	25	25	23	20	23	23	22	19
	kW	1.64	1.67	1.72	1.77	1.76	1.79	1.85	1.90	1.86	1.90	1.96	2.02	1.95	1.99	2.06	2.12	2.03	2.08	2.14	2.21	2.10	2.14	2.21	2.28
	Amps	6.1	6.2	6.4	6.7	6.6	6.7	6.9	7.2	7.1	7.3	7.5	7.8	7.6	7.8	8.1	8.4	8.1	8.3	8.6	8.9	8.6	8.8	9.1	9.5
	HI PR	229	247	260	272	257	277	292	305	292	315	332	347	333	358	378	395	375	403	426	444	414	445	470	491
	LO PR	103	110	120	128	109	116	127	135	113	120	132	140	119	127	138	147	125	133	145	154	129	137	150	159
	MBh	23.0	23.5	24.6	26.2	22.5	22.9	24.0	25.6	22.0	22.4	23.5	25.0	21.4	21.9	22.9	24.4	20.4	20.8	21.7	23.2	18.9	19.2	20.1	21.5
	S/T	0.93	0.90	0.81	0.66	0.96	0.93	0.84	0.68	0.99	0.95	0.86	0.70	1.00	0.98	0.89	0.72	1.00	1.00	0.92	0.75	1.00	1.00	0.93	0.75
	ΔT	25	24	23	20	25	24	23	20	25	24	23	20	25	25	23	20	23	24	23	20	22	22	21	19
kW	1.68	1.71	1.76	1.82	1.80	1.84	1.89	1.95	1.91	1.95	2.01	2.07	2.00	2.04	2.11	2.17	2.08	2.13	2.19	2.26	2.15	2.20	2.27	2.34	
Amps	6.2	6.4	6.6	6.8	6.7	6.9	7.1	7.4	7.3	7.5	7.8	8.1	7.8	8.0	8.3	8.6	8.3	8.6	8.8	9.2	8.9	9.1	9.4	9.7	
HI PR	236	254	268	280	265	285	301	314	301	324	343	357.3	343	369	390	407	386	416	439	458	427	459	485	506	
LO PR	106	113	123	131	112	119	130	139	117	124	136	144.4	123	130	142	152	129	137	149	159	133	141	154	164	
MBh	23.7	24.2	25.3	27.0	23.2	23.6	24.8	26.4	22.6	23.1	24.2	25.8	22.1	22.5	23.6	25.1	21.0	21.4	22.4	23.9	19.4	19.8	20.7	22.1	
S/T	0.97	0.94	0.85	0.69	1.00	0.97	0.88	0.71	1.00	1.00	0.90	0.73	1.00	1.00	0.93	0.75	1.00	1.00	0.96	0.78	1.00	1.00	0.97	0.79	
ΔT	24	23	22	19	24	23	22	19	23	24	22	19	23	23	22	19	21	22	22	19	20	20	21	18	
kW	1.69	1.72	1.78	1.83	1.81	1.85	1.91	1.97	1.92	1.96	2.02	2.09	2.02	2.06	2.12	2.19	2.10	2.14	2.21	2.28	2.17	2.22	2.29	2.36	
Amps	6.3	6.4	6.7	6.9	6.8	7.0	7.2	7.5	7.4	7.6	7.8	8.1	7.9	8.1	8.4	8.7	8.4	8.6	8.9	9.3	8.9	9.2	9.5	9.8	
HI PR	239	257	271	283	268	288	304	317	304	328	346	361	347	373	394	411	390	420	443	462	431	464	490	511	
LO PR	107	114	125	133	113	121	132	140	118	125	137	146	124	132	144	153	130	138	151	161	134	143	156	166	

IDB: Entering Indoor Dry Bulb Temperature  
 High and low pressures are measured at the liquid and suction service valves.  
 Shaded area reflects AHRI conditions  
 kW = Total system power  
 Amps = outdoor unit amps (comp.+fan)

IDB	AIRFLOW	OUTDOOR AMBIENT TEMPERATURE												ENTERING INDOOR WET BULB TEMPERATURE											
		65°F				75°F				85°F				95°F				105°F				115°F			
		59	63	67	71	59	63	67	71	59	63	67	71	59	63	67	71	59	63	67	71	59	63	67	71
70	MBh	22.5	23.4	25.6	-	22.0	22.8	25.0	-	21.5	22.3	24.4	-	21.0	21.7	23.8	-	19.9	20.6	22.6	-	18.4	19.1	21.0	-
	S/T	0.73	0.61	0.42	-	0.76	0.63	0.44	-	0.78	0.65	0.45	-	0.80	0.67	0.46	-	0.83	0.69	0.48	-	0.84	0.70	0.49	-
	ΔT	17	15	11	-	17	15	11	-	17	15	11	-	17	15	11	-	17	15	11	-	16	14	10	-
	kW	1.63	1.66	1.71	-	1.75	1.78	1.83	-	1.85	1.89	1.95	-	1.94	1.98	2.04	-	2.02	2.06	2.13	-	2.09	2.13	2.20	-
	Amps	5.8	6.0	6.2	-	6.3	6.4	6.7	-	6.8	7.0	7.2	-	7.3	7.5	7.7	-	7.8	8.0	8.2	-	8.2	8.4	8.7	-
	Hi PR	228	246	259	-	256	276	291	-	291	314	331	-	332	357	377	-	373	402	424	-	413	444	469	-
	Lo PR	105	112	122	-	111	118	129	-	115	123	134	-	121	129	141	-	127	135	147	-	131	140	152	-
	MBh	21.9	22.7	24.8	-	21.4	22.2	24.3	-	20.9	21.6	23.7	-	20.4	21.1	23.1	-	19.3	20.0	22.0	-	17.9	18.6	20.3	-
	S/T	0.70	0.58	0.40	-	0.72	0.60	0.42	-	0.74	0.62	0.43	-	0.76	0.64	0.44	-	0.79	0.66	0.46	-	0.80	0.67	0.46	-
	ΔT	18	15	12	-	18	15	12	-	18	15	12	-	18	15	12	-	18	15	12	-	16	14	11	-
kW	1.62	1.65	1.70	-	1.73	1.77	1.82	-	1.84	1.87	1.93	-	1.93	1.97	2.03	-	2.00	2.05	2.11	-	2.07	2.11	2.18	-	
Amps	5.8	5.9	6.1	-	6.2	6.4	6.6	-	6.8	6.9	7.2	-	7.2	7.4	7.7	-	7.7	7.9	8.1	-	8.2	8.4	8.6	-	
Hi PR	226	243	257	-	254	273	288	-	288	310	328	-	329	354	373	-	370	398	420	-	408	440	464	-	
Lo PR	104	111	121	-	110	117	127	-	114	121	132	-	120	127	139	-	126	134	146	-	130	138	151	-	
MBh	20.2	20.9	22.9	-	19.7	20.4	22.4	-	19.3	20.0	21.9	-	18.8	19.5	21.3	-	17.8	18.5	20.3	-	16.5	17.1	18.8	-	
S/T	0.67	0.56	0.39	-	0.70	0.58	0.40	-	0.71	0.60	0.41	-	0.74	0.62	0.43	-	0.76	0.64	0.44	-	0.77	0.64	0.45	-	
ΔT	18	15	12	-	18	16	12	-	18	16	12	-	18	16	12	-	18	16	12	-	17	14	11	-	
kW	1.58	1.61	1.66	-	1.69	1.73	1.78	-	1.79	1.83	1.89	-	1.88	1.92	1.98	-	1.96	2.00	2.06	-	2.02	2.06	2.13	-	
Amps	5.6	5.7	5.9	-	6.1	6.2	6.4	-	6.6	6.7	7.0	-	7.0	7.2	7.4	-	7.5	7.7	7.9	-	7.9	8.1	8.4	-	
Hi PR	219	236	249	-	246	265	280	-	280	301	318	-	319	343	362	-	359	386	407	-	396	426	450	-	
Lo PR	101	107	117	-	106	113	124	-	111	118	129	-	116	124	135	-	122	130	141	-	126	134	146	-	

75	MBh	22.9	23.6	25.5	27.4	22.4	23.0	24.9	26.8	21.9	22.5	24.4	26.1	21.3	22.0	23.8	25.5	20.3	20.9	22.6	24.2	18.8	19.3	20.9	22.4
	S/T	0.83	0.74	0.56	0.36	0.86	0.77	0.58	0.37	0.88	0.79	0.60	0.38	0.91	0.81	0.62	0.40	0.95	0.85	0.64	0.41	0.95	0.85	0.65	0.42
	ΔT	19	18	15	10	20	18	15	10	20	18	15	10	20	18	15	10	20	18	15	10	18	17	14	10
	kW	1.64	1.67	1.72	1.77	1.76	1.79	1.85	1.91	1.86	1.90	1.96	2.02	1.96	2.00	2.06	2.13	2.04	2.08	2.15	2.21	2.10	2.15	2.22	2.29
	Amps	5.9	6.0	6.2	6.4	6.3	6.5	6.7	7.0	6.9	7.1	7.3	7.6	7.4	7.5	7.8	8.1	7.8	8.0	8.3	8.6	8.3	8.5	8.8	9.1
	Hi PR	231	248	262	273	259	279	294	307	294	317	334	349	335	361	381	397	377	406	429	447	417	448	474	494
	Lo PR	106	113	123	131	112	119	130	139	116	124	135	144	122	130	142	151	128	136	149	158	133	141	154	164
	MBh	22.3	22.9	24.8	26.6	21.7	22.4	24.2	26.0	21.2	21.8	23.6	25.4	20.7	21.3	23.1	24.8	19.7	20.2	21.9	23.5	18.2	18.8	20.3	21.8
	S/T	0.79	0.71	0.54	0.34	0.82	0.73	0.56	0.36	0.84	0.75	0.57	0.37	0.87	0.78	0.59	0.38	0.90	0.81	0.61	0.39	0.91	0.81	0.62	0.40
	ΔT	20	19	15	11	20	19	15	11	21	19	15	11	21	19	16	11	20	19	15	11	19	18	14	10
kW	1.63	1.66	1.71	1.76	1.75	1.78	1.84	1.89	1.85	1.89	1.95	2.01	1.94	1.98	2.04	2.11	2.02	2.06	2.13	2.20	2.09	2.13	2.20	2.27	
Amps	5.8	6.0	6.2	6.4	6.3	6.4	6.7	6.9	6.8	7.0	7.2	7.5	7.3	7.5	7.7	8.0	7.8	8.0	8.2	8.5	8.2	8.4	8.7	9.1	
Hi PR	228	246	260	271	256	276	291	304	291	314	331	345	332	357	377	393	373	402	424	443	413	444	469	489	
Lo PR	105	112	122	130	111	118	129	137	115	123	134	143	121	129	141	150	127	135	147	157	131	140	152	162	
MBh	20.5	21.1	22.9	24.6	20.1	20.7	22.4	24.0	19.6	20.2	21.8	23.4	19.1	19.7	21.3	22.9	18.2	18.7	20.2	21.7	16.8	17.3	18.7	20.1	
S/T	0.76	0.68	0.52	0.33	0.79	0.71	0.54	0.34	0.81	0.73	0.55	0.35	0.84	0.75	0.57	0.36	0.87	0.78	0.59	0.38	0.88	0.78	0.59	0.38	
ΔT	21	19	16	11	21	19	16	11	21	19	16	11	21	19	16	11	21	19	16	11	19	18	15	10	
kW	1.59	1.62	1.67	1.72	1.71	1.74	1.79	1.85	1.81	1.84	1.90	1.96	1.90	1.94	2.00	2.06	1.97	2.01	2.08	2.14	2.04	2.08	2.15	2.22	
Amps	5.7	5.8	6.0	6.2	6.1	6.3	6.5	6.7	6.6	6.8	7.0	7.3	7.1	7.3	7.5	7.8	7.6	7.7	8.0	8.3	8.0	8.2	8.5	8.8	
Hi PR	222	238	252	263	249	267	282	295	283	304	321	335	322	346	366	382	362	390	412	429	400	431	455	474	
Lo PR	102	108	118	126	108	114	125	133	112	119	130	138	117	125	136	145	123	131	143	152	127	135	148	157	

IDB: Entering Indoor Dry Bulb Temperature  
 High and low pressures are measured at the liquid and suction service valves.  
 Shaded area reflects ACCA (TVA) conditions  
 Amps = outdoor unit amps (comp.+fan)  
 kW = Total system power

IDB		OUTDOOR AMBIENT TEMPERATURE												105°F												115°F																																																																																																																																																							
		65°F						75°F						85°F						95°F						105°F						115°F																																																																																																																																																	
		59	63	67	71	75	79	59	63	67	71	75	79	59	63	67	71	75	79	59	63	67	71	75	79	59	63	67	71	75	79	59	63	67	71	75	79																																																																																																																																												
<b>900</b>		MBh	23.3	23.8	25.5	27.2	22.8	23.3	24.9	26.6	22.2	22.7	24.3	26.0	21.7	22.2	23.7	25.3	20.6	21.1	22.5	24.1	19.1	19.5	20.8	22.3	S/T	0.91	0.85	0.69	0.52	0.94	0.88	0.72	0.54	0.97	0.91	0.74	0.55	1.00	0.94	0.76	0.57	1.00	1.00	0.79	0.59	1.00	1.00	0.80	0.60	ΔT	22	21	18	14	22	21	18	15	22	21	18	15	22	21	18	15	22	21	22	18	15	20	20	17	14	kW	1.65	1.69	1.74	1.79	1.77	1.81	1.86	1.92	1.88	1.92	1.98	2.04	1.97	2.01	2.08	2.14	2.05	2.10	2.16	2.23	2.12	2.17	2.24	2.31	Amps	5.9	6.1	6.3	6.5	6.4	6.6	6.8	7.0	7.0	7.1	7.4	7.6	7.4	7.6	7.9	8.2	7.9	8.1	8.4	8.7	8.4	8.6	8.9	9.2	Hi PR	233	251	265	276	261	281	297	310	297	320	338	352	339	364	385	401	381	410	433	452	421	453	478	499	Lo PR	107	114	124	132	113	120	131	140	118	125	137	145	123	131	143	153	129	138	150	160	134	142	155	166
<b>800</b>		MBh	22.6	23.1	24.7	26.4	22.1	22.6	24.2	25.8	21.6	22.1	23.6	25.2	21.1	21.5	23.0	24.6	20.0	20.5	21.9	23.4	18.5	18.9	20.2	21.6	S/T	0.87	0.81	0.66	0.50	0.90	0.84	0.69	0.51	0.92	0.87	0.70	0.53	0.95	0.89	0.73	0.54	0.99	0.93	0.75	0.56	1.00	0.93	0.76	0.57	ΔT	23	22	19	15	23	22	19	15	23	22	19	15	23	22	19	15	23	22	19	15	21	21	18	14	kW	1.64	1.67	1.72	1.78	1.76	1.79	1.85	1.91	1.86	1.90	1.96	2.02	1.96	2.00	2.06	2.13	2.04	2.08	2.15	2.21	2.10	2.15	2.22	2.29	Amps	5.9	6.0	6.2	6.4	6.3	6.5	6.7	7.0	6.9	7.1	7.3	7.6	7.4	7.5	7.8	8.1	7.8	8.0	8.3	8.6	8.3	8.5	8.8	9.1	Hi PR	231	248	262	273	259	279	294	307	294	317	335	349	335	361	381	397	377	406	429	447	417	448	474	494	Lo PR	106	113	123	131	112	119	130	139	116	124	135	144	122	130	142	151	128	136	149	158	133	141	154	164	
<b>700</b>		MBh	20.9	21.4	22.8	24.4	20.4	20.9	22.3	23.8	19.9	20.4	21.8	23.3	19.4	19.9	21.2	22.7	18.5	18.9	20.2	21.6	17.1	17.5	18.7	20.0	S/T	0.84	0.79	0.64	0.48	0.87	0.81	0.66	0.50	0.89	0.83	0.68	0.51	0.92	0.86	0.70	0.52	0.95	0.89	0.73	0.54	0.96	0.90	0.73	0.55	ΔT	23	22	19	15	23	22	19	15	23	22	19	16	23	22	20	16	23	22	19	15	22	21	18	14	kW	1.60	1.63	1.68	1.73	1.72	1.75	1.81	1.86	1.82	1.86	1.92	1.98	1.91	1.95	2.01	2.08	1.99	2.03	2.09	2.16	2.05	2.10	2.16	2.23	Amps	5.7	5.9	6.0	6.3	6.2	6.3	6.5	6.8	6.7	6.9	7.1	7.4	7.2	7.3	7.6	7.9	7.6	7.8	8.1	8.4	8.1	8.3	8.6	8.9	Hi PR	224	241	254	265	251	270	285	298	286	307	324	338	325	350	370	385	366	394	416	434	404	435	459	479	Lo PR	103	109	119	127	109	116	126	134	113	120	131	140	119	126	138	147	124	132	144	154	129	137	149	159	
<b>85</b>		MBh	23.7	24.2	25.3	27.0	23.2	23.6	24.8	26.4	22.6	23.1	24.2	25.8	22.1	22.5	23.6	25.1	21.0	21.4	22.4	23.9	19.4	19.8	20.7	22.1	S/T	0.95	0.92	0.83	0.67	0.99	0.95	0.86	0.70	1.00	0.98	0.88	0.72	1.00	1.00	0.91	0.74	1.00	1.00	0.95	0.77	1.00	1.00	0.95	0.77	ΔT	23	23	22	19	23	23	22	19	23	23	22	19	23	22	20	16	23	22	19	15	22	21	18	14	kW	1.66	1.70	1.75	1.80	1.79	1.82	1.88	1.94	1.89	1.93	1.99	2.06	1.99	2.03	2.09	2.16	2.07	2.11	2.18	2.25	2.14	2.18	2.25	2.33	Amps	6.0	6.1	6.3	6.6	6.5	6.6	6.8	7.1	7.0	7.2	7.4	7.7	7.5	7.7	7.9	8.2	8.0	8.2	8.5	8.8	8.5	8.7	9.0	9.3	Hi PR	235	253	267	279	264	284	300	313	300	323	341	356	342	368	389	405	385	414	437	456	425	457	483	504	Lo PR	108	115	126	134	114	122	133	141	119	126	138	147	125	133	145	154	131	139	152	162	135	144	157	167	
<b>800</b>		MBh	23.0	23.5	24.6	26.2	22.5	22.9	24.0	25.6	22.0	22.4	23.5	25.0	21.4	21.9	22.9	24.4	20.4	20.8	21.7	23.2	18.9	19.2	20.1	21.5	S/T	0.91	0.88	0.79	0.64	0.94	0.91	0.82	0.67	0.97	0.93	0.84	0.68	1.00	0.96	0.87	0.71	1.00	1.00	0.90	0.73	1.00	1.00	0.91	0.74	ΔT	24	24	22	19	24	24	23	20	24	24	23	20	24	24	23	20	25	24	23	20	22	22	21	18	kW	1.65	1.69	1.74	1.79	1.77	1.81	1.86	1.92	1.88	1.92	1.98	2.04	1.97	2.01	2.08	2.14	2.05	2.10	2.16	2.23	2.12	2.17	2.24	2.31	Amps	5.9	6.1	6.3	6.5	6.4	6.6	6.8	7.0	7.0	7.1	7.4	7.6	7.4	7.6	7.9	8.2	7.9	8.1	8.4	8.7	8.4	8.6	8.9	9.2	Hi PR	233	251	265	276	261	281	297	310	297	320	338	352	339	364	385	401	381	410	433	452	421	453	478	499	Lo PR	107	114	124	132	113	120	131	140	118	125	137	145	123	131	143	153	129	138	150	160	134	142	155	166	
<b>700</b>		MBh	21.3	21.7	22.7	24.2	20.8	21.2	22.2	23.7	20.3	20.7	21.7	23.1	19.8	20.2	21.1	22.5	18.8	19.2	20.1	21.4	17.4	17.7	18.6	19.8	S/T	0.88	0.85	0.76	0.62	0.91	0.88	0.79	0.64	0.93	0.90	0.81	0.66	0.96	0.93	0.84	0.68	1.00	0.96	0.87	0.71	1.00	0.97	0.88	0.71	ΔT	25	24	23	20	25	24	23	20	25	24	23	20	25	25	23	20	25	24	23	20	22	23	21	19	kW	1.61	1.65	1.70	1.75	1.73	1.77	1.82	1.88	1.83	1.87	1.93	1.99	1.93	1.97	2.03	2.09	2.00	2.05	2.11	2.18	2.07	2.11	2.18	2.25	Amps	5.8	5.9	6.1	6.3	6.2	6.4	6.6	6.8	6.8	6.9	7.2	7.4	7.2	7.4	7.7	7.9	7.7	7.9	8.1	8.5	8.2	8.4	8.6	9.0	Hi PR	226	243	257	268	254	273	288	301	288	310	328	342	328	353	373	389	370	398	420	438	408	438	464	484	Lo PR	104	110	121	128	110	117	127	136	114	121	132	141	120	127	139	148	126	134	146	155	130	138	151	161	

IDB: Entering Indoor Dry Bulb Temperature  
 High and low pressures are measured at the liquid and suction service valves.  
 Shaded area reflects AHRI conditions  
 Amps = outdoor unit amps (comp.+fan)  
 kW = Total system power

IDB		OUTDOOR AMBIENT TEMPERATURE																											
		65°F				75°F				85°F				95°F				105°F				115°F							
		59	63	67	71	59	63	67	71	59	63	67	71	59	63	67	71	59	63	67	71	59	63	67	71				
<b>70</b>		ENTERING INDOOR WET BULB TEMPERATURE																											
AIRFLOW		59	63	67	71	59	63	67	71	59	63	67	71	59	63	67	71	59	63	67	71	59	63	67	71	59	63	67	71
MBh		24.9	25.8	28.3	-	24.4	25.2	27.7	-	23.8	24.6	27.0	-	23.2	24.0	26.3	-	22.0	22.8	25.0	-	20.4	21.2	23.2	-				
S/T		0.72	0.60	0.42	-	0.74	0.62	0.43	-	0.76	0.64	0.44	-	0.79	0.66	0.46	-	0.82	0.68	0.47	-	0.82	0.69	0.48	-				
ΔT		19	16	12	-	19	16	13	-	19	16	13	-	19	17	13	-	19	16	12	-	18	15	12	-				
kW		1.60	1.64	1.70	-	1.74	1.78	1.85	-	1.87	1.91	1.98	-	1.97	2.02	2.10	-	2.07	2.12	2.20	-	2.15	2.20	2.28	-				
Amps		6.6	6.8	7.0	-	7.2	7.4	7.7	-	7.9	8.1	8.4	-	8.5	8.7	9.0	-	9.1	9.3	9.6	-	9.6	9.9	10.2	-				
HI PR		209	224	237	-	234	252	266	-	266	286	303	-	303	326	345	-	341	367	388	-	377	406	428	-				
LO PR		103	109	119	-	109	116	126	-	113	120	131	-	119	126	138	-	124	132	144	-	128	137	149	-				
MBh		27.0	28.0	30.7	-	26.4	27.4	30.0	-	25.8	26.7	29.3	-	25.1	26.1	28.5	-	23.9	24.7	27.1	-	22.1	22.9	25.1	-				
S/T		0.74	0.62	0.43	-	0.77	0.64	0.45	-	0.79	0.66	0.46	-	0.82	0.68	0.47	-	0.85	0.71	0.49	-	0.85	0.71	0.49	-				
ΔT		18	15	12	-	18	15	12	-	18	15	12	-	18	16	12	-	18	15	12	-	17	14	11	-				
kW		1.65	1.69	1.75	-	1.79	1.83	1.90	-	1.92	1.97	2.04	-	2.03	2.08	2.16	-	2.13	2.18	2.26	-	2.21	2.26	2.35	-				
Amps		6.8	7.0	7.3	-	7.4	7.6	7.9	-	8.1	8.3	8.6	-	8.7	9.0	9.3	-	9.3	9.6	9.9	-	9.9	10.2	10.6	-				
HI PR		215	231	244	-	241	260	274	-	274	295	312	-	313	336	355	-	352	378	400	-	389	418	442	-				
LO PR		106	113	123	-	112	119	130	-	116	124	135	-	122	130	142	-	128	136	149	-	132	141	154	-				
MBh		27.3	28.3	31.0	-	26.7	27.6	30.3	-	26.0	27.0	29.5	-	25.4	26.3	28.8	-	24.1	25.0	27.4	-	22.3	23.2	25.4	-				
S/T		0.76	0.63	0.44	-	0.79	0.66	0.45	-	0.81	0.67	0.47	-	0.83	0.70	0.48	-	0.86	0.72	0.50	-	0.87	0.73	0.50	-				
ΔT		17	15	11	-	17	15	11	-	17	15	11	-	17	15	11	-	17	15	11	-	16	14	10	-				
kW		1.65	1.69	1.75	-	1.80	1.84	1.91	-	1.92	1.97	2.04	-	2.04	2.09	2.16	-	2.13	2.18	2.26	-	2.21	2.27	2.35	-				
Amps		6.9	7.0	7.3	-	7.5	7.7	7.9	-	8.2	8.4	8.7	-	8.8	9.0	9.3	-	9.4	9.6	10.0	-	10.0	10.2	10.6	-				
HI PR		216	232	245	-	242	260	275	-	275	296	313	-	314	337	356	-	353	380	401	-	390	419	443	-				
LO PR		106	113	123	-	112	119	130	-	117	124	136	-	123	130	142	-	128	137	149	-	133	141	154	-				

IDB		OUTDOOR AMBIENT TEMPERATURE																											
		65°F				75°F				85°F				95°F				105°F				115°F							
		59	63	67	71	59	63	67	71	59	63	67	71	59	63	67	71	59	63	67	71	59	63	67	71				
<b>75</b>		ENTERING INDOOR WET BULB TEMPERATURE																											
AIRFLOW		59	63	67	71	59	63	67	71	59	63	67	71	59	63	67	71	59	63	67	71	59	63	67	71	59	63	67	71
MBh		25.4	26.1	28.3	30.3	24.8	25.5	27.6	29.6	24.2	24.9	26.9	28.9	23.6	24.3	26.3	28.2	22.4	23.1	25.0	26.8	20.8	21.4	23.1	24.8				
S/T		0.82	0.73	0.55	0.36	0.85	0.76	0.57	0.37	0.87	0.78	0.59	0.38	0.89	0.80	0.61	0.39	0.93	0.83	0.63	0.40	0.94	0.84	0.63	0.41				
ΔT		22	20	16	11	22	20	17	11	22	20	17	11	22	20	17	12	22	20	16	11	20	19	15	11				
kW		1.62	1.66	1.72	1.78	1.76	1.80	1.87	1.93	1.88	1.93	2.00	2.07	1.99	2.04	2.12	2.19	2.09	2.14	2.22	2.30	2.17	2.22	2.30	2.39				
Amps		6.7	6.9	7.1	7.4	7.3	7.5	7.7	8.1	8.0	8.2	8.5	8.8	8.6	8.8	9.1	9.5	9.2	9.4	9.7	10.1	9.7	10.0	10.4	10.8				
HI PR		211	227	239	250	236	254	269	280	269	289	306	319	306	330	348	363	345	371	392	408	381	410	433	451				
LO PR		104	110	121	128	110	117	127	136	114	121	132	141	120	127	139	148	125	134	146	155	130	138	151	161				
MBh		27.5	28.3	30.6	32.9	26.8	27.6	29.9	32.1	26.2	27.0	29.2	31.3	25.6	<b>26.3</b>	28.5	30.6	24.3	25.0	27.1	29.0	22.5	23.2	25.1	26.9				
S/T		0.85	0.76	0.57	0.37	0.88	0.78	0.59	0.38	0.90	0.80	0.61	0.39	0.93	<b>0.83</b>	0.63	0.40	0.96	0.86	0.65	0.42	0.97	0.87	0.66	0.42				
ΔT		20	19	15	11	21	19	16	11	21	19	16	11	21	<b>19</b>	16	11	20	19	15	11	19	18	14	10				
kW		1.66	1.70	1.76	1.83	1.81	1.85	1.92	1.99	1.94	1.98	2.06	2.13	2.05	<b>2.10</b>	2.18	2.26	2.15	2.20	2.28	2.36	2.23	2.28	2.37	2.46				
Amps		6.9	7.1	7.3	7.6	7.5	7.7	8.0	8.3	8.2	8.4	8.7	9.1	8.8	<b>9.1</b>	9.4	9.8	9.4	9.7	10.0	10.4	10.0	10.3	10.7	11.1				
HI PR		217	234	247	257	244	262	277	289	277	298	315	329	316	<b>340</b>	359	374	355	382	404	421	393	422	446	465				
LO PR		107	114	124	132	113	120	131	140	118	125	136	145	123	<b>131</b>	143	153	129	138	150	160	134	142	155	166				
MBh		27.8	28.6	30.9	33.2	27.1	27.9	30.2	32.4	26.5	27.2	29.5	31.6	25.8	26.6	28.8	30.9	24.5	25.3	27.3	29.3	22.7	23.4	25.3	27.2				
S/T		0.86	0.77	0.58	0.38	0.89	0.80	0.61	0.39	0.92	0.82	0.62	0.40	0.95	0.85	0.64	0.41	0.98	0.88	0.66	0.43	0.99	0.89	0.67	0.43				
ΔT		20	18	15	10	20	18	15	10	20	18	15	10	20	18	15	10	20	18	15	10	18	17	14	10				
kW		1.67	1.71	1.77	1.83	1.81	1.86	1.92	1.99	1.94	1.99	2.06	2.14	2.06	2.11	2.18	2.26	2.15	2.21	2.29	2.37	2.24	2.29	2.37	2.46				
Amps		6.9	7.1	7.4	7.7	7.5	7.7	8.0	8.3	8.2	8.5	8.8	9.1	8.9	9.1	9.4	9.8	9.5	9.7	10.1	10.5	10.1	10.3	10.7	11.1				
HI PR		218	234	248	258	245	263	278	290	278	299	316	330	317	341	360	375	356	383	405	422	394	424	447	467				
LO PR		107	114	125	133	113	121	132	140	118	125	137	146	124	132	144	153	130	138	151	161	134	143	156	166				

IDB: Entering Indoor Dry Bulb Temperature  
 High and low pressures are measured at the liquid and suction service valves.  
 Shaded area reflects ACCA (TVA) conditions  
 Amps = outdoor unit amps (comp.+fan)  
 kW = Total system power

IDB		OUTDOOR AMBIENT TEMPERATURE												115°F																	
		65°F						75°F						85°F						95°F						105°F					
		59	63	67	71	75	79	59	63	67	71	75	79	59	63	67	71	75	79	59	63	67	71	75	79	59	63	67	71	75	79
		ENTERING INDOOR WET BULB TEMPERATURE																													
		AIRFLOW																													
80	MBh	25.8	26.4	28.2	30.1	25.2	25.8	27.5	29.4	24.6	25.1	26.9	28.7	24.0	24.5	26.2	28.0	22.8	23.3	24.9	26.6	21.1	21.6	23.1	24.7						
	S/T	0.89	0.84	0.68	0.5	0.93	0.87	0.71	0.53	0.95	0.89	0.73	0.5	0.98	0.92	0.75	0.56	1.02	0.96	0.78	0.6	1.03	0.96	0.78	0.59						
	ΔT	24	23	20	16	25	24	20	16	25	24	20	16	25	24	21	16	24	23	20	16	23	22	19	15						
	kW	1.63	1.67	1.73	1.8	1.77	1.82	1.88	1.95	1.90	1.95	2.02	2.1	2.01	2.06	2.14	2.21	2.11	2.16	2.24	2.3	2.19	2.24	2.32	2.41						
	Amps	6.8	6.9	7.2	7.5	7.4	7.6	7.8	8.1	8.1	8.3	8.6	8.9	8.7	8.9	9.2	9.6	9.2	9.5	9.8	10.2	9.8	10.1	10.5	10.9						
	HI PR	213	229	242	252.3	239	257	271	283	272	292	309	322.0	309	333	352	367	348	375	396	412.5	385	414	437	456						
	LO PR	105	112	122	129.7	111	118	129	137	115	123	134	142.4	121	129	140	150	127	135	147	156.8	131	139	152	162						
	MBh	28.0	28.6	30.5	32.6	27.3	27.9	29.8	31.9	26.7	27.2	29.1	31.1	26.0	26.6	28.4	30.4	24.7	25.3	27.0	28.8	22.9	23.4	25.0	26.7						
	S/T	0.93	0.87	0.71	0.5	0.96	0.90	0.73	0.55	0.99	0.92	0.75	0.6	1.00	0.95	0.78	0.58	1.00	0.99	0.81	0.6	1.00	1.00	0.81	0.61						
	ΔT	23	22	19	15	23	22	19	15	23	22	19	15	23	22	19	15	22	22	19	15	20	20	18	14						
kW	1.68	1.72	1.78	1.8	1.82	1.87	1.94	2.01	1.95	2.00	2.07	2.2	2.07	2.12	2.20	2.28	2.17	2.22	2.30	2.4	2.25	2.31	2.39	2.48							
Amps	7.0	7.2	7.4	7.7	7.6	7.8	8.1	8.4	8.3	8.5	8.8	9.2	8.9	9.1	9.5	9.9	9.5	9.8	10.1	10.5	10.1	10.4	10.8	11.2							
HI PR	219	236	249	260.1	246	265	280	292	280	301	318	331.9	319	343	362	378	359	386	408	425.3	396	427	451	470							
LO PR	108	115	126	133.7	114	122	133	141	119	126	138	146.8	125	133	145	154	131	139	152	161.6	135	144	157	167							
MBh	28.2	28.9	30.8	33.0	27.6	28.2	30.1	32.2	26.9	27.5	29.4	31.4	26.3	26.8	28.7	30.7	25.0	25.5	27.2	29.1	23.1	23.6	25.2	27.0							
S/T	0.95	0.89	0.72	0.5	0.98	0.92	0.75	0.56	1.00	0.94	0.77	0.6	1.00	0.97	0.79	0.59	1.00	1.00	0.82	0.6	1.00	1.00	0.83	0.62							
ΔT	22	21	18	15	22	21	18	15	22	21	18	15	21	21	19	15	20	21	18	15	19	19	17	14							
kW	1.68	1.72	1.78	1.8	1.83	1.87	1.94	2.01	1.96	2.01	2.08	2.2	2.07	2.13	2.20	2.28	2.17	2.23	2.31	2.4	2.26	2.31	2.40	2.49							
Amps	7.0	7.2	7.4	7.7	7.6	7.8	8.1	8.4	8.3	8.5	8.8	9.2	8.9	9.2	9.5	9.9	9.6	9.8	10.2	10.6	10.2	10.4	10.8	11.2							
HI PR	220	237	250	260.9	247	266	281	293	281	302	319	332.9	320	344	364	379	360	387	409	426.6	398	428	452	471							
LO PR	108	115	126	134.1	115	122	133	142	119	127	138	147.3	125	133	145	155	131	139	152	162.1	136	144	157	168							
85	MBh	26.3	26.8	28.0	29.9	25.7	26.1	27.4	29.2	25.0	25.5	26.7	28.5	24.4	24.9	26.1	27.8	23.2	23.7	24.8	26.4	21.5	21.9	23.0	24.5						
	S/T	0.94	0.90	0.82	0.66	0.97	0.94	0.85	0.69	1.00	0.96	0.87	0.70	1.00	0.99	0.90	0.73	1.00	1.00	0.93	0.75	1.00	1.00	0.94	0.76						
	ΔT	26	25	24	21	26	26	24	21	26	26	24	21	26	26	25	21	24	25	24	21	23	23	23	20						
	kW	1.65	1.69	1.75	1.81	1.79	1.83	1.90	1.97	1.92	1.96	2.04	2.11	2.03	2.08	2.16	2.24	2.13	2.18	2.26	2.34	2.21	2.26	2.35	2.43						
	Amps	6.8	7.0	7.3	7.6	7.4	7.6	7.9	8.2	8.1	8.3	8.6	9.0	8.7	9.0	9.3	9.7	9.3	9.6	9.9	10.3	9.9	10.2	10.6	11.0						
	HI PR	215	231	244	255	241	260	274	286	274	295	312	325	312	336	355	370	352	378	399	417	388	418	441	460						
	LO PR	106	113	123	131	112	119	130	138	116	124	135	144	122	130	142	151	128	136	149	158	132	141	154	164						
	MBh	28.5	29.0	30.4	32.4	27.8	28.3	29.7	31.7	27.1	27.7	29.0	30.9	26.5	27.0	28.3	30.1	25.1	25.6	26.8	28.6	23.3	23.7	24.9	26.5						
	S/T	0.97	0.94	0.85	0.69	1.00	0.97	0.88	0.71	1.00	1.00	0.90	0.73	1.00	1.00	0.93	0.75	1.00	1.00	0.96	0.78	1.00	1.00	0.97	0.79						
	ΔT	24	24	23	19	24	24	23	20	24	24	23	20	23	24	23	20	22	22	23	20	20	21	21	18						
kW	1.69	1.73	1.80	1.86	1.84	1.89	1.95	2.03	1.97	2.02	2.09	2.17	2.09	2.14	2.22	2.30	2.19	2.24	2.32	2.41	2.27	2.33	2.41	2.50							
Amps	7.0	7.2	7.5	7.8	7.7	7.9	8.1	8.5	8.4	8.6	8.9	9.3	9.0	9.2	9.6	10.0	9.6	9.9	10.2	10.6	10.2	10.5	10.9	11.3							
HI PR	222	239	252	263	249	268	283	295	283	304	321	335	322	347	366	382	362	390	412	430	400	431	455	475							
LO PR	109	116	127	135	115	123	134	143	120	128	139	148	126	134	146	156	132	140	153	163	137	145	159	169							
MBh	28.7	29.3	30.7	32.7	28.1	28.6	30.0	32.0	27.4	27.9	29.3	31.2	26.7	27.3	28.5	30.4	25.4	25.9	27.1	28.9	23.5	24.0	25.1	26.8							
S/T	0.99	0.96	0.86	0.70	1.00	0.99	0.90	0.73	1.00	1.00	0.92	0.74	1.00	1.00	0.95	0.77	1.00	1.00	0.98	0.80	1.00	1.00	0.99	0.80							
ΔT	23	23	22	19	23	23	22	19	22	23	22	19	22	22	22	19	21	21	22	19	20	20	20	18							
kW	1.70	1.74	1.80	1.87	1.85	1.89	1.96	2.03	1.98	2.03	2.10	2.18	2.09	2.15	2.22	2.31	2.19	2.25	2.33	2.42	2.28	2.33	2.42	2.51							
Amps	7.1	7.2	7.5	7.8	7.7	7.9	8.2	8.5	8.4	8.6	8.9	9.3	9.0	9.3	9.6	10.0	9.7	9.9	10.3	10.7	10.3	10.5	10.9	11.4							
HI PR	222	239	253	263	249	268	283	296	284	305	322	336	323	348	367	383	364	391	413	431	402	432	456	476							
LO PR	110	117	127	135	116	123	134	143	120	128	140	149	126	134	147	156	132	141	154	164	137	146	159	169							

IDB: Entering Indoor Dry Bulb Temperature  
 High and low pressures are measured at the liquid and suction service valves.  
 Shaded area reflects AHRI conditions  
 Amps = outdoor unit amps (comp.+fan)  
 kW = Total system power

IDB	AIRFLOW	OUTDOOR AMBIENT TEMPERATURE												ENTERING INDOOR WET BULB TEMPERATURE											
		65°F				75°F				85°F				95°F				105°F				115°F			
		59	63	67	71	59	63	67	71	59	63	67	71	59	63	67	71	59	63	67	71	59	63	67	71
70	MBh	29.5	30.6	33.5	-	28.8	29.9	32.7	-	28.1	29.2	31.9	-	27.4	28.4	31.2	-	26.1	27.0	29.6	-	24.2	25.0	27.4	-
	S/T	0.68	0.57	0.39	-	0.70	0.59	0.41	-	0.72	0.60	0.42	-	0.75	0.62	0.43	-	0.77	0.65	0.45	-	0.78	0.65	0.45	-
	ΔT	18	15	12	-	18	15	12	-	18	15	12	-	18	16	12	-	18	15	12	-	17	14	11	-
	kW	2.32	2.37	2.44	-	2.49	2.55	2.63	-	2.65	2.70	2.79	-	2.78	2.84	2.93	-	2.89	2.96	3.05	-	2.99	3.06	3.16	-
	Amps	8.5	8.7	9.0	-	9.2	9.5	9.8	-	10.1	10.3	10.7	-	10.8	11.1	11.4	-	11.5	11.8	12.2	-	12.2	12.5	13.0	-
	HI PR	235	252	267	-	263	283	299	-	299	322	340	-	341	367	387	-	384	413	436	-	424	456	482	-
	LO PR	101	107	117	-	107	113	124	-	111	118	129	-	116	124	135	-	122	130	142	-	126	134	146	-
	MBh	32.0	33.1	36.3	-	31.2	32.4	35.5	-	30.5	31.6	34.6	-	29.7	30.8	33.8	-	28.2	29.3	32.1	-	26.2	27.1	29.7	-
	S/T	0.71	0.59	0.41	-	0.73	0.61	0.42	-	0.75	0.63	0.43	-	0.77	0.65	0.45	-	0.80	0.67	0.46	-	0.81	0.68	0.47	-
	ΔT	17	15	11	-	17	15	11	-	17	15	11	-	18	15	12	-	17	15	11	-	16	14	11	-
kW	2.38	2.43	2.50	-	2.56	2.61	2.69	-	2.71	2.77	2.86	-	2.85	2.91	3.00	-	2.97	3.03	3.13	-	3.07	3.14	3.24	-	
Amps	8.8	9.0	9.3	-	9.5	9.7	10.1	-	10.4	10.6	11.0	-	11.1	11.4	11.8	-	11.8	12.1	12.6	-	12.6	12.9	13.3	-	
HI PR	242	260	275	-	271	292	308	-	309	332	351	-	352	378	399	-	395	426	449	-	437	470	497	-	
LO PR	104	111	121	-	110	117	128	-	114	121	133	-	120	128	139	-	126	134	146	-	130	138	151	-	
MBh	32.9	34.1	37.4	-	32.2	33.3	36.5	-	31.4	32.5	35.7	-	30.6	31.7	34.8	-	29.1	30.2	33.0	-	27.0	27.9	30.6	-	
S/T	0.74	0.62	0.43	-	0.77	0.64	0.44	-	0.79	0.66	0.45	-	0.81	0.68	0.47	-	0.84	0.70	0.49	-	0.85	0.71	0.49	-	
ΔT	17	14	11	-	17	15	11	-	17	15	11	-	17	15	11	-	17	14	11	-	16	13	10	-	
kW	2.40	2.45	2.52	-	2.58	2.63	2.71	-	2.73	2.79	2.88	-	2.87	2.93	3.03	-	2.99	3.06	3.16	-	3.09	3.16	3.26	-	
Amps	8.8	9.1	9.4	-	9.6	9.8	10.2	-	10.5	10.7	11.1	-	11.2	11.5	11.9	-	12.0	12.3	12.7	-	12.7	13.0	13.5	-	
HI PR	244	263	278	-	274	295	311	-	312	335	354	-	355	382	403	-	399	430	454	-	441	475	501	-	
LO PR	105	112	122	-	111	118	129	-	115	123	134	-	121	129	141	-	127	135	147	-	131	140	152	-	

IDB	AIRFLOW	OUTDOOR AMBIENT TEMPERATURE												ENTERING INDOOR WET BULB TEMPERATURE											
		65°F				75°F				85°F				95°F				105°F				115°F			
		59	63	67	71	59	63	67	71	59	63	67	71	59	63	67	71	59	63	67	71	59	63	67	71
75	MBh	30.0	30.9	33.4	35.9	29.3	30.2	32.7	35.1	28.6	29.5	31.9	34.2	27.9	28.7	31.1	33.4	26.5	27.3	29.6	31.7	24.6	25.3	27.4	29.4
	S/T	0.77	0.69	0.52	0.34	0.80	0.72	0.54	0.35	0.82	0.73	0.56	0.36	0.85	0.76	0.57	0.37	0.88	0.79	0.60	0.38	0.89	0.79	0.60	0.39
	ΔT	20	19	15	11	21	19	16	11	21	19	16	11	21	19	16	11	20	19	15	11	19	18	14	10
	kW	2.34	2.39	2.46	2.54	2.51	2.57	2.65	2.73	2.67	2.72	2.81	2.90	2.80	2.86	2.96	3.05	2.92	2.98	3.08	3.18	3.02	3.08	3.18	3.29
	Amps	8.6	8.8	9.1	9.5	9.3	9.6	9.9	10.3	10.2	10.4	10.8	11.2	10.9	11.2	11.6	12.0	11.6	11.9	12.3	12.8	12.3	12.6	13.1	13.6
	HI PR	237	255	269	281	266	286	302	315	302	325	344	358	344	371	391	408	388	417	440	459	428	461	487	507
	LO PR	102	108	118	126	108	114	125	133	112	119	130	138	117	125	136	145	123	131	143	152	127	135	148	158
	MBh	32.5	33.5	36.2	38.9	31.8	32.7	35.4	38.0	31.0	31.9	34.5	37.1	30.2	31.1	33.7	36.2	28.7	29.6	32.0	34.4	26.6	27.4	29.7	31.8
	S/T	0.80	0.72	0.54	0.35	0.83	0.74	0.56	0.36	0.85	0.76	0.58	0.37	0.88	0.79	0.60	0.38	0.91	0.82	0.62	0.40	0.92	0.82	0.62	0.40
	ΔT	20	18	15	10	20	19	15	11	20	19	15	11	20	19	15	11	20	18	15	10	19	17	14	10
kW	2.40	2.45	2.52	2.60	2.58	2.63	2.71	2.80	2.73	2.79	2.88	2.97	2.87	2.94	3.03	3.13	2.99	3.06	3.16	3.26	3.09	3.16	3.27	3.37	
Amps	8.8	9.1	9.4	9.7	9.6	9.8	10.2	10.6	10.5	10.7	11.1	11.5	11.2	11.5	11.9	12.4	12.0	12.3	12.7	13.2	12.7	13.0	13.5	14.0	
HI PR	244	263	278	290	274	295	312	325	312	336	354	370	355	382	404	421	399	430	454	473	441	475	502	523	
LO PR	105	112	122	130	111	118	129	137	115	123	134	143	121	129	141	150	127	135	147	157	131	140	152	162	
MBh	33.5	34.5	37.3	40.0	32.7	33.7	36.4	39.1	31.9	32.9	35.6	38.2	31.1	32.1	34.7	37.3	29.6	30.5	33.0	35.4	27.4	28.2	30.5	32.8	
S/T	0.84	0.75	0.57	0.37	0.87	0.78	0.59	0.38	0.89	0.80	0.60	0.39	0.92	0.82	0.62	0.40	0.96	0.86	0.65	0.42	0.96	0.86	0.65	0.42	
ΔT	19	18	14	10	19	18	15	10	19	18	15	10	20	18	15	10	19	18	15	10	18	17	14	9	
kW	2.41	2.46	2.54	2.62	2.60	2.65	2.73	2.82	2.76	2.81	2.90	3.00	2.90	2.96	3.05	3.15	3.02	3.08	3.18	3.29	3.12	3.19	3.29	3.40	
Amps	8.9	9.2	9.5	9.8	9.7	9.9	10.3	10.7	10.6	10.8	11.2	11.6	11.3	11.6	12.0	12.5	12.1	12.4	12.8	13.3	12.8	13.2	13.6	14.1	
HI PR	247	266	280	292	277	298	315	328	315	339	358	373	359	386	408	425	403	434	459	478	446	480	507	528	
LO PR	106	113	123	131	112	119	130	139	116	124	135	144	122	130	142	151	128	136	149	159	133	141	154	164	

IDB: Entering Indoor Dry Bulb Temperature  
 High and low pressures are measured at the liquid and suction service valves.  
 Shaded area reflects ACCA (TVA) conditions  
 Amps = outdoor unit amps (comp.+fan)  
 kW = Total system power

IDB		OUTDOOR AMBIENT TEMPERATURE												ENTERING INDOOR WET BULB TEMPERATURE											
		65°F				75°F				85°F				95°F				105°F				115°F			
		59	63	67	71	59	63	67	71	59	63	67	71	59	63	67	71	59	63	67	71	59	63	67	71
<b>80</b>	AIRFLOW	30.5	31.2	33.3	35.6	29.8	30.5	32.6	34.8	29.1	29.8	31.8	34.0	28.4	29.0	31.0	33.2	27.0	27.6	29.5	31.5	25.0	25.5	27.3	29.2
	MBh	0.85	0.79	0.65	0.5	0.88	0.82	0.67	0.50	0.90	0.84	0.69	0.5	0.93	0.87	0.71	0.53	0.96	0.90	0.74	0.6	0.97	0.91	0.74	0.56
	S/T	23	22	19	15	23	22	19	15	23	22	19	15	23	22	19	15	23	22	19	15	21	20	18	14
	ΔT	2.36	2.41	2.48	2.6	2.53	2.59	2.67	2.75	2.69	2.75	2.83	2.9	2.83	2.89	2.98	3.08	2.94	3.01	3.10	3.2	3.04	3.11	3.21	3.32
	kW	8.7	8.9	9.2	9.6	9.4	9.7	10.0	10.4	10.3	10.5	10.9	11.3	11.0	11.3	11.7	12.1	11.7	12.0	12.4	12.9	12.5	12.8	13.2	13.7
	Amps	239	258	272	283.7	269	289	305	318	305	329	347	362.1	348	374	395	412	391	421	445	463.9	432	465	491	513
	HI PR	103	109	120	127.3	109	116	126	134	113	120	131	139.8	119	126	138	147	124	132	144	153.8	129	137	149	159
	LO PR	33.1	33.8	36.1	38.6	32.3	33.0	35.3	37.7	31.5	32.2	34.4	36.8	30.8	31.4	<b>33.6</b>	35.9	29.2	29.9	31.9	34.1	27.1	27.7	29.6	31.6
	MBh	0.88	0.82	0.67	0.5	0.91	0.85	0.70	0.52	0.93	0.88	0.71	0.5	0.96	0.90	<b>0.74</b>	0.55	1.00	0.94	0.76	0.6	1.00	0.95	0.77	0.58
	S/T	22	21	19	15	23	22	19	15	23	22	19	15	23	22	<b>19</b>	15	22	21	19	15	21	20	17	14
ΔT	2.42	2.46	2.54	2.6	2.60	2.65	2.73	2.82	2.76	2.81	2.90	3.0	2.90	2.96	<b>3.05</b>	3.15	3.02	3.08	3.18	3.3	3.12	3.19	3.29	3.40	
kW	8.9	9.2	9.5	9.8	9.7	9.9	10.3	10.7	10.6	10.8	11.2	11.6	11.3	11.6	<b>12.0</b>	12.5	12.1	12.4	12.8	13.3	12.8	13.2	13.6	14.1	
Amps	247	266	280	292.5	277	298	315	328	315	339	358	373.3	359	386	<b>408</b>	425	404	434	459	478.3	446	480	507	528	
HI PR	106	113	123	131.2	112	119	130	139	116	124	135	144.1	122	130	<b>142</b>	151	128	136	149	158.6	133	141	154	164	
LO PR	34.1	34.8	37.2	39.8	33.3	34.0	36.3	38.8	32.5	33.2	35.5	37.9	31.7	32.4	34.6	37.0	30.1	30.8	32.9	35.1	27.9	28.5	30.5	32.6	
MBh	0.92	0.86	0.70	0.5	0.96	0.90	0.73	0.54	1.00	0.92	0.75	0.6	1.00	0.95	0.77	0.58	1.00	1.00	0.80	0.6	1.00	1.00	0.81	0.60	
S/T	21	20	18	14	22	21	18	14	22	21	18	14	22	21	18	15	21	21	18	14	19	19	17	13	
ΔT	2.43	2.48	2.56	2.6	2.62	2.67	2.76	2.84	2.78	2.84	2.93	3.0	2.92	2.98	3.08	3.18	3.04	3.11	3.21	3.3	3.15	3.21	3.32	3.43	
kW	9.0	9.2	9.6	9.9	9.8	10.0	10.4	10.8	10.7	10.9	11.3	11.8	11.4	11.7	12.1	12.6	12.2	12.5	12.9	13.4	12.9	13.3	13.7	14.3	
Amps	249	268	283	295.4	280	301	318	331	318	342	361	377.0	362	390	412	429	408	439	463	483.1	450	485	512	534	
HI PR	107	114	124	132.5	113	120	131	140	118	125	137	145.5	124	131	144	153	130	138	150	160.2	134	143	156	166	
LO PR	31.1	31.7	33.2	35.4	30.3	30.9	32.4	34.6	29.6	30.2	31.6	33.7	28.9	29.5	30.9	32.9	27.5	28.0	29.3	31.3	25.4	25.9	27.2	29.0	

<b>1050</b>	AIRFLOW	31.1	31.7	33.2	35.4	30.3	30.9	32.4	34.6	29.6	30.2	31.6	33.7	28.9	29.5	30.9	32.9	27.5	28.0	29.3	31.3	25.4	25.9	27.2	29.0
	MBh	0.89	0.86	0.77	0.63	0.92	0.89	0.80	0.65	0.94	0.91	0.82	0.67	0.97	0.94	0.85	0.69	1.00	0.98	0.88	0.71	1.00	0.98	0.89	0.72
	S/T	24	24	22	19	24	24	23	20	24	24	23	20	25	24	23	20	24	24	23	20	22	22	21	18
	ΔT	2.38	2.43	2.50	2.58	2.55	2.61	2.69	2.77	2.71	2.77	2.86	2.95	2.85	2.91	3.00	3.10	2.97	3.03	3.13	3.23	3.07	3.13	3.24	3.34
	kW	8.8	9.0	9.3	9.6	9.5	9.7	10.1	10.5	10.4	10.6	11.0	11.4	11.1	11.4	11.8	12.2	11.8	12.1	12.6	13.1	12.6	12.9	13.3	13.9
	Amps	242	260	275	287	271	292	308	322	309	332	351	366	351	378	399	416	395	425	449	469	437	470	496	518
	HI PR	104	111	121	129	110	117	128	136	114	121	133	141	120	128	139	148	126	134	146	155	130	138	151	161
	LO PR	33.7	34.3	35.9	38.3	32.9	33.5	35.1	37.5	32.1	32.7	34.3	36.6	31.3	31.9	33.4	35.7	29.7	30.3	31.8	33.9	27.6	28.1	29.4	31.4
	MBh	0.92	0.89	0.80	0.65	0.95	0.92	0.83	0.67	0.98	0.94	0.85	0.69	1.00	0.98	0.88	0.71	1.00	1.00	0.91	0.74	1.00	1.00	0.92	0.75
	S/T	24	23	22	19	24	24	22	19	24	24	22	19	24	24	23	20	23	23	22	19	21	22	21	18
ΔT	2.43	2.48	2.56	2.64	2.62	2.67	2.76	2.84	2.78	2.84	2.93	3.02	2.92	2.98	3.08	3.18	3.04	3.11	3.21	3.32	3.15	3.21	3.32	3.43	
kW	9.0	9.2	9.6	9.9	9.8	10.0	10.4	10.8	10.7	10.9	11.3	11.8	11.4	11.7	12.1	12.6	12.2	12.5	12.9	13.4	12.9	13.3	13.7	14.3	
Amps	249	268	283	295	280	301	318	331	318	342	361	377	362	390	412	429	408	439	463	483	450	485	512	534	
HI PR	107	114	124	133	113	120	131	140	118	125	137	146	124	131	144	153	130	138	150	160	134	143	156	166	
LO PR	34.7	35.3	37.0	39.5	33.9	34.5	36.2	38.6	33.1	33.7	35.3	37.7	32.3	32.9	34.4	36.7	30.6	31.2	32.7	34.9	28.4	28.9	30.3	32.3	
MBh	0.97	0.93	0.84	0.68	1.00	0.97	0.87	0.71	1.00	0.99	0.89	0.73	1.00	1.00	0.92	0.75	1.00	1.00	0.96	0.78	1.00	1.00	0.97	0.78	
S/T	23	22	21	18	23	23	21	19	23	23	21	19	22	22	22	19	21	21	21	18	19	20	20	17	
ΔT	2.45	2.50	2.58	2.66	2.64	2.69	2.78	2.87	2.80	2.86	2.95	3.05	2.94	3.01	3.10	3.21	3.07	3.13	3.24	3.34	3.17	3.24	3.35	3.46	
kW	9.1	9.3	9.7	10.0	9.9	10.1	10.5	10.9	10.8	11.0	11.4	11.9	11.5	11.8	12.2	12.7	12.3	12.6	13.1	13.6	13.1	13.4	13.9	14.4	
Amps	252	271	286	298	282	304	321	335	321	346	365	381	366	394	416	434	412	443	468	488	455	489	517	539	
HI PR	108	115	126	134	114	122	133	141	119	126	138	147	125	133	145	154	131	139	152	162	135	144	157	167	
LO PR	35.3	35.9	37.6	40.0	34.5	35.1	36.8	39.2	33.7	34.3	35.9	38.3	33.3	33.9	35.5	37.9	31.9	32.5	34.1	36.5	30.5	31.1	32.7	35.1	

IDB: Entering Indoor Dry Bulb Temperature  
 High and low pressures are measured at the liquid and suction service valves.  
 Shaded area reflects AHRI conditions  
 Amps = outdoor unit amps (comp.+fan)  
 kW = Total system power

IDB		OUTDOOR AMBIENT TEMPERATURE																								
		65°F				75°F				85°F				95°F				105°F				115°F				
		59	63	67	71	59	63	67	71	59	63	67	71	59	63	67	71	59	63	67	71	59	63	67	71	
<b>70</b>	<b>1225</b>	MBh	35.1	36.4	39.9	-	34.3	35.6	39.0	-	33.5	34.7	38.0	-	32.7	33.9	37.1	-	31.0	32.2	35.2	-	28.8	29.8	32.7	-
		S/T	0.72	0.60	0.42	-	0.75	0.63	0.43	-	0.77	0.64	0.45	-	0.79	0.66	0.46	-	0.82	0.69	0.48	-	0.83	0.69	0.48	-
		ΔT	19	17	13	-	19	17	13	-	19	17	13	-	19	17	13	-	19	17	13	-	18	16	12	-
		kW	2.81	2.86	2.94	-	3.00	3.06	3.15	-	3.17	3.24	3.33	-	3.33	3.39	3.50	-	3.45	3.53	3.63	-	3.57	3.64	3.75	-
	<b>1400</b>	Amps	10.3	10.6	10.9	-	11.1	11.4	11.8	-	12.1	12.4	12.8	-	12.9	13.2	13.7	-	13.7	14.1	14.5	-	14.5	14.9	15.4	-
		HI PR	227	237	250	-	247	266	281	-	281	302	319	-	320	344	363	-	360	387	409	-	398	428	452	-
		LO PR	101	107	117	-	107	113	124	-	111	118	129	-	116	124	135	-	122	130	142	-	126	134	147	-
		MBh	38.1	39.4	43.2	-	37.2	38.5	42.2	-	36.3	37.6	41.2	-	35.4	36.7	40.2	-	33.6	34.9	38.2	-	31.2	32.3	35.4	-
	<b>1575</b>	S/T	0.75	0.63	0.43	-	0.78	0.65	0.45	-	0.80	0.67	0.46	-	0.82	0.69	0.48	-	0.86	0.71	0.49	-	0.86	0.72	0.50	-
		ΔT	19	16	12	-	19	16	12	-	19	16	12	-	19	17	13	-	19	16	12	-	18	15	12	-
		kW	2.87	2.92	3.01	-	3.07	3.13	3.22	-	3.25	3.31	3.41	-	3.40	3.47	3.58	-	3.54	3.61	3.72	-	3.65	3.73	3.84	-
		Amps	10.6	10.9	11.2	-	11.5	11.7	12.1	-	12.4	12.7	13.1	-	13.3	13.6	14.0	-	14.1	14.5	14.9	-	15.0	15.3	15.8	-
<b>75</b>	HI PR	227	244	258	-	255	274	289	-	289	312	329	-	330	355	375	-	371	399	421	-	410	441	466	-	
	LO PR	104	111	121	-	110	117	128	-	114	122	133	-	120	128	139	-	126	134	146	-	130	138	151	-	
	MBh	39.2	40.6	44.5	-	38.3	39.7	43.5	-	37.4	38.7	42.4	-	36.5	37.8	41.4	-	34.6	35.9	39.3	-	32.1	33.3	36.4	-	
	S/T	0.79	0.66	0.46	-	0.82	0.68	0.47	-	0.84	0.70	0.48	-	0.86	0.72	0.50	-	0.90	0.75	0.52	-	0.90	0.76	0.52	-	
<b>1225</b>	ΔT	18	16	12	-	18	16	12	-	18	16	12	-	18	16	12	-	18	16	12	-	17	15	11	-	
	kW	2.89	2.94	3.03	-	3.09	3.15	3.25	-	3.27	3.34	3.44	-	3.43	3.50	3.61	-	3.56	3.64	3.75	-	3.68	3.76	3.87	-	
	Amps	10.7	11.0	11.3	-	11.6	11.8	12.2	-	12.5	12.8	13.3	-	13.4	13.7	14.2	-	14.2	14.6	15.1	-	15.1	15.5	16.0	-	
	HI PR	229	247	260	-	257	277	292	-	292	315	332	-	333	358	378	-	375	403	426	-	414	445	470	-	
<b>1400</b>	LO PR	105	112	122	-	111	118	129	-	115	123	134	-	121	129	141	-	127	135	148	-	131	140	153	-	
	MBh	35.7	36.8	39.8	42.7	34.9	35.9	38.9	41.7	34.1	35.1	38.0	40.7	33.2	34.2	37.0	39.7	31.6	32.5	35.2	37.8	29.2	30.1	32.6	35.0	
	S/T	0.82	0.74	0.56	0.36	0.85	0.76	0.58	0.37	0.87	0.78	0.59	0.38	0.90	0.81	0.61	0.39	0.94	0.84	0.63	0.41	0.95	0.85	0.64	0.41	
	ΔT	22	20	17	11	22	21	17	12	22	21	17	12	23	21	17	12	22	20	17	12	21	19	16	11	
<b>1575</b>	kW	2.83	2.88	2.96	3.05	3.02	3.08	3.17	3.27	3.20	3.26	3.36	3.46	3.35	3.42	3.52	3.63	3.48	3.55	3.66	3.78	3.59	3.67	3.78	3.90	
	Amps	10.4	10.7	11.0	11.4	11.2	11.5	11.9	12.3	12.2	12.5	12.9	13.4	13.0	13.3	13.8	14.3	13.9	14.2	14.7	15.2	14.7	15.0	15.5	16.1	
	HI PR	222	239	253	263	249	268	283	296	284	305	322	336	323	348	367	383	363	391	413	431	402	432	456	476	
	LO PR	102	108	118	126	108	115	125	133	112	119	130	138	118	125	137	145	123	131	143	152	127	136	148	158	
<b>75</b>	MBh	38.7	39.8	43.1	46.3	37.8	38.9	42.1	45.2	36.9	38.0	41.1	44.1	36.0	37.1	40.1	43.1	34.2	35.2	38.1	40.9	31.7	32.6	35.3	37.9	
	S/T	0.85	0.76	0.58	0.37	0.88	0.79	0.60	0.39	0.91	0.81	0.61	0.40	0.94	0.84	0.63	0.41	0.97	0.87	0.66	0.42	0.98	0.88	0.66	0.43	
	ΔT	22	20	16	11	22	20	17	11	22	20	17	11	22	20	17	12	22	20	16	11	20	19	15	11	
	kW	2.89	2.95	3.03	3.12	3.09	3.15	3.25	3.35	3.27	3.34	3.44	3.54	3.43	3.50	3.61	3.72	3.57	3.64	3.75	3.87	3.68	3.76	3.88	4.00	
<b>1400</b>	Amps	10.7	11.0	11.3	11.7	11.6	11.8	12.2	12.7	12.5	12.8	13.3	13.8	13.4	13.7	14.2	14.7	14.3	14.6	15.1	15.7	15.1	15.5	16.0	16.6	
	HI PR	229	247	260	272	257	277	292	305	292	315	332	347	333	358	378	395	375	403	426	444	414	446	470	491	
	LO PR	105	112	122	130	111	118	129	137	115	123	134	143	121	129	141	150	127	135	148	157	131	140	153	163	
	MBh	39.9	41.0	44.4	47.7	38.9	40.1	43.4	46.6	38.0	39.1	42.4	45.5	37.1	38.2	41.3	44.4	35.2	36.3	39.3	42.1	32.6	33.6	36.4	39.0	
<b>1575</b>	S/T	0.90	0.80	0.61	0.39	0.93	0.83	0.63	0.40	0.95	0.85	0.64	0.41	0.98	0.88	0.66	0.43	1.00	0.91	0.69	0.44	1.00	0.92	0.70	0.45	
	ΔT	21	19	16	11	21	19	16	11	21	19	16	11	21	20	16	11	21	19	16	11	19	18	15	10	
	kW	2.91	2.97	3.05	3.14	3.12	3.18	3.27	3.37	3.30	3.36	3.47	3.57	3.46	3.53	3.64	3.75	3.59	3.67	3.78	3.90	3.71	3.79	3.91	4.03	
	Amps	10.8	11.1	11.4	11.8	11.7	11.9	12.3	12.8	12.7	13.0	13.4	13.9	13.5	13.8	14.3	14.8	14.4	14.7	15.2	15.8	15.2	15.6	16.1	16.7	
<b>75</b>	HI PR	231	249	263	274	260	279	295	308	295	318	336	350	336	362	382	399	378	407	430	449	418	450	475	496	
	LO PR	106	113	123	131	112	119	130	139	117	124	135	144	122	130	142	151	128	136	149	159	133	141	154	164	

IDB: Entering Indoor Dry Bulb Temperature  
 High and low pressures are measured at the liquid and suction service valves.  
 Shaded area reflects ACCA (TVA) conditions  
 Amps = outdoor unit amps (comp.+fan)  
 kW = Total system power



		OUTDOOR AMBIENT TEMPERATURE																																			
		65°F						75°F						85°F						95°F						105°F						115°F					
		AIRFLOW			IDB			AIRFLOW			IDB			AIRFLOW			IDB			AIRFLOW			IDB			AIRFLOW			IDB			AIRFLOW			IDB		
		59	63	67	71	59	63	67	71	59	63	67	71	59	63	67	71	59	63	67	71	59	63	67	71	59	63	67	71	59	63	67	71				
<b>80</b>	<b>1225</b>	MBh	36.4	37.1	39.7	42.4	35.5	36.3	38.8	41.4	34.7	35.4	37.8	40.5	33.8	34.6	36.9	39.5	32.1	32.8	35.1	37.5	32.1	32.8	35.1	37.5	29.8	30.4	32.5	34.7	29.8	30.4	32.5	34.7			
		S/T	0.90	0.85	0.69	0.5	0.94	0.88	0.71	0.53	0.96	0.90	0.73	0.5	0.99	0.93	0.76	0.57	1.03	0.96	0.78	0.6	1.03	0.96	0.78	0.6	1.04	0.97	0.79	0.59	1.04	0.97	0.79	0.59			
		ΔT	25	24	21	16	25	24	21	17	25	24	21	17	25	24	21	17	25	24	21	17	25	24	21	17	23	22	19	15	23	22	19	15			
	<b>1400</b>	KW	2.85	2.90	2.98	3.1	3.05	3.11	3.20	3.29	3.22	3.29	3.39	3.5	3.38	3.45	3.55	3.66	3.51	3.58	3.69	3.8	3.51	3.58	3.69	3.8	3.62	3.70	3.81	3.93	3.62	3.70	3.81	3.93			
		Amps	10.5	10.8	11.1	11.5	11.4	11.6	12.0	12.4	12.3	12.6	13.0	13.5	13.2	13.5	13.9	14.4	14.0	14.3	14.8	15.4	14.0	14.3	14.8	15.4	14.8	15.2	15.7	16.3	14.8	15.2	15.7	16.3			
		HI PR	225	242	255	266.1	252	271	286	299	287	308	326	339.6	326	351	371	387	367	395	417	435.1	367	395	417	435.1	406	437	461	481	406	437	461	481			
	<b>1575</b>	LO PR	103	110	120	127.4	109	116	126	135	113	120	131	139.8	119	126	138	147	124	132	145	154.0	124	132	145	154.0	129	137	150	159	129	137	150	159			
		MBh	39.4	40.2	43.0	46.0	38.5	39.3	42.0	44.9	37.6	38.4	41.0	43.8	36.6	37.4	40.0	42.8	34.8	35.6	38.0	40.6	34.8	35.6	38.0	40.6	32.2	32.9	35.2	37.6	32.2	32.9	35.2	37.6			
		S/T	0.94	0.88	0.71	0.5	0.97	0.91	0.74	0.55	1.00	0.93	0.76	0.6	1.00	0.96	0.78	0.59	1.00	1.00	0.81	0.6	1.00	1.00	0.81	0.6	1.00	1.00	0.82	0.61	1.00	1.00	0.82	0.61			
	<b>85</b>	<b>1225</b>	ΔT	24	23	20	16	25	23	20	16	25	24	20	16	24	24	21	16	23	23	20	16	23	23	20	16	21	21	18	15	21	21	18	15		
			KW	2.91	2.97	3.05	3.1	3.12	3.18	3.27	3.37	3.30	3.36	3.47	3.6	3.46	3.53	3.64	3.75	3.59	3.67	3.78	3.9	3.59	3.67	3.78	3.9	3.71	3.79	3.91	4.03	3.71	3.79	3.91	4.03		
			Amps	10.8	11.1	11.4	11.8	11.7	11.9	12.3	12.8	12.7	13.0	13.4	13.9	13.5	13.9	14.3	14.8	14.4	14.7	15.2	15.8	14.4	14.7	15.2	15.8	15.2	15.6	16.1	16.7	15.2	15.6	16.1	16.7		
<b>1400</b>		HI PR	231	249	263	274.3	260	279	295	308	295	318	336	350.1	336	362	382	399	378	407	430	448.6	378	407	430	448.6	418	450	475	496	418	450	475	496			
		LO PR	106	113	123	131.3	112	119	130	139	117	124	135	144.2	122	130	142	151	128	137	149	158.7	128	137	149	158.7	133	141	154	164	133	141	154	164			
		MBh	40.6	41.5	44.3	47.3	39.6	40.5	43.3	46.2	38.7	39.5	42.2	45.1	37.7	38.6	41.2	44.0	35.9	36.6	39.1	41.8	35.9	36.6	39.1	41.8	33.2	33.9	36.3	38.8	33.2	33.9	36.3	38.8			
<b>1575</b>		S/T	1.00	0.92	0.75	0.6	1.00	0.95	0.78	0.58	1.00	1.00	0.80	0.6	1.00	1.00	0.82	0.61	1.00	1.00	0.85	0.6	1.00	1.00	0.85	0.6	1.00	1.00	0.86	0.64	1.00	1.00	0.86	0.64			
		ΔT	24	22	19	15	23	23	20	16	23	23	20	16	22	23	20	16	21	21	19	16	21	21	19	16	19	20	18	15	19	20	18	15			
		KW	2.93	2.99	3.08	3.2	3.14	3.20	3.30	3.40	3.32	3.39	3.49	3.6	3.48	3.56	3.66	3.78	3.62	3.70	3.81	3.9	3.62	3.70	3.81	3.9	3.74	3.82	3.94	4.06	3.74	3.82	3.94	4.06			
<b>85</b>		<b>1225</b>	Amps	10.9	11.2	11.5	11.9	11.8	12.0	12.4	12.9	12.8	13.1	13.5	14.0	13.6	14.0	14.4	15.0	14.5	14.9	15.4	15.9	14.5	14.9	15.4	15.9	15.4	15.7	16.3	16.9	15.4	15.7	16.3	16.9		
			HI PR	227	244	258	269	254	274	289	302	289	311	329	343	330	355	375	391	371	399	421	439	371	399	421	439	410	441	466	486	410	441	466	486		
			LO PR	104	111	121	129	110	117	128	136	114	121	133	141	120	128	139	148	126	134	146	155	126	134	146	155	130	138	151	161	130	138	151	161		
	<b>1400</b>	MBh	40.1	40.9	42.8	45.6	39.1	39.9	41.8	44.6	38.2	39.0	40.8	43.5	37.3	38.0	39.8	42.5	35.4	36.1	37.8	40.3	35.4	36.1	37.8	40.3	32.8	33.4	35.0	37.4	32.8	33.4	35.0	37.4			
		S/T	0.98	0.95	0.85	0.69	1.00	0.98	0.89	0.72	1.00	1.00	0.91	0.74	1.00	1.00	0.94	0.76	1.00	1.00	0.97	0.79	1.00	1.00	0.97	0.79	1.00	1.00	0.98	0.80	1.00	1.00	0.98	0.80			
		ΔT	26	25	24	21	26	26	24	21	25	26	24	21	24	25	25	21	23	24	24	21	23	24	24	21	22	22	23	20	22	22	23	20			
	<b>1575</b>	KW	2.93	2.99	3.08	3.17	3.14	3.20	3.30	3.40	3.32	3.39	3.49	3.60	3.48	3.56	3.66	3.78	3.62	3.70	3.81	3.93	3.62	3.70	3.81	3.93	3.74	3.82	3.94	4.06	3.74	3.82	3.94	4.06			
		Amps	10.9	11.2	11.5	11.9	11.8	12.0	12.4	12.9	12.8	13.1	13.5	14.0	13.6	14.0	14.4	15.0	14.5	14.9	15.4	15.9	14.5	14.9	15.4	15.9	15.4	15.7	16.3	16.9	15.4	15.7	16.3	16.9			
		HI PR	234	252	266	277.1	262	282	298	311	298	321	339	353.6	340	366	386	403	382	411	434	453.1	382	411	434	453.1	422	455	480	501	422	455	480	501			
	<b>1575</b>	LO PR	107	114	125	132.6	113	121	132	140	118	125	137	145.6	124	132	144	153	130	138	151	160.3	130	138	151	160.3	134	143	156	166	134	143	156	166			
		MBh	41.3	42.1	44.1	47.0	40.3	41.1	43.0	45.9	39.4	40.1	42.0	44.8	38.4	39.1	41.0	43.7	36.5	37.2	38.9	41.5	36.5	37.2	38.9	41.5	33.8	34.4	36.1	38.5	33.8	34.4	36.1	38.5			
		S/T	1.00	0.99	0.90	0.73	1.00	1.00	0.93	0.75	1.00	1.00	0.95	0.77	1.00	1.00	0.98	0.80	1.00	1.00	1.00	0.83	1.00	1.00	1.00	0.83	1.00	1.00	1.00	0.83	1.00	1.00	1.00	0.83			
<b>1575</b>	ΔT	24	24	23	20	24	24	23	20	23	23	23	20	22	23	24	20	21	22	23	20	21	22	23	20	20	20	21	19	20	20	21	19				
	KW	2.95	3.01	3.10	3.19	3.16	3.23	3.32	3.42	3.35	3.42	3.52	3.63	3.51	3.58	3.69	3.81	3.65	3.73	3.84	3.96	3.65	3.73	3.84	3.96	3.77	3.85	3.97	4.10	3.77	3.85	3.97	4.10				
	Amps	11.0	11.3	11.6	12.0	11.9	12.2	12.6	13.0	12.9	13.2	13.6	14.1	13.8	14.1	14.6	15.1	14.6	15.0	15.5	16.1	14.6	15.0	15.5	16.1	15.5	15.9	16.4	17.1	15.5	15.9	16.4	17.1				
<b>1575</b>	HI PR	236	254	268	280	265	285	301	314	301	324	342	357	343	369	390	407	386	415	439	458	386	415	439	458	427	459	485	506	427	459	485	506				
	LO PR	108	115	126	134	114	122	133	142	119	126	138	147	125	133	145	154	131	139	152	162	131	139	152	162	135	144	157	167	135	144	157	167				
	MBh	41.3	42.1	44.1	47.0	40.3	41.1	43.0	45.9	39.4	40.1	42.0	44.8	38.4	39.1	41.0	43.7	36.5	37.2	38.9	41.5	36.5	37.2	38.9	41.5	33.8	34.4	36.1	38.5	33.8	34.4	36.1	38.5				

IDB: Entering Indoor Dry Bulb Temperature  
 High and low pressures are measured at the liquid and suction service valves.  
 Shaded area reflects AHRI conditions  
 Amps = outdoor unit amps (comp.+fan)  
 kW = Total system power

IDB		OUTDOOR AMBIENT TEMPERATURE																								
		65°F				75°F				85°F				95°F				105°F				115°F				
		59	63	67	71	59	63	67	71	59	63	67	71	59	63	67	71	59	63	67	71	59	63	67	71	
		ENTERING INDOOR WET BULB TEMPERATURE																								
		MBh	40.4	41.9	45.9	-	39.5	40.9	44.8	-	38.5	39.9	43.7	-	37.6	38.9	42.7	-	35.7	37.0	40.5	-	33.1	34.3	37.5	-
		S/T	0.71	0.59	0.41	-	0.73	0.61	0.42	-	0.75	0.63	0.43	-	0.78	0.65	0.45	-	0.80	0.67	0.47	-	0.81	0.68	0.47	-
		ΔT	19	16	12	-	19	16	12	-	19	16	12	-	19	17	13	-	19	16	12	-	18	15	12	-
<b>1400</b>		kW	3.22	3.28	3.37	-	3.44	3.51	3.62	-	3.64	3.72	3.83	-	3.82	3.90	4.02	-	3.97	4.05	4.18	-	4.10	4.19	4.32	-
		Amps	11.8	12.1	12.5	-	12.8	13.1	13.5	-	13.9	14.2	14.7	-	14.8	15.2	15.7	-	15.8	16.2	16.7	-	16.7	17.1	17.7	-
		HI PR	241	259	274	-	270	291	307	-	307	331	349	-	350	377	398	-	394	424	448	-	435	468	494	-
		LO PR	104	110	120	-	110	117	127	-	114	121	132	-	123	131	139	-	125	133	146	-	130	138	151	-
		MBh	43.8	45.4	49.7	-	42.7	44.3	48.5	-	41.7	43.2	47.4	-	40.7	42.2	46.2	-	38.7	40.1	43.9	-	35.8	37.1	40.7	-
		S/T	0.73	0.61	0.42	-	0.76	0.63	0.44	-	0.78	0.65	0.45	-	0.80	0.67	0.47	-	0.83	0.70	0.48	-	0.84	0.70	0.49	-
		ΔT	18	16	12	-	19	16	12	-	19	16	12	-	19	16	12	-	19	16	12	-	17	15	11	-
<b>1600</b>		kW	3.29	3.35	3.45	-	3.52	3.59	3.70	-	3.73	3.80	3.92	-	3.91	3.99	4.12	-	4.07	4.15	4.28	-	4.20	4.29	4.42	-
		Amps	12.2	12.5	12.9	-	13.1	13.5	13.9	-	14.3	14.6	15.1	-	15.3	15.6	16.2	-	16.2	16.6	17.2	-	17.2	17.6	18.2	-
		HI PR	248	267	282	-	279	300	317	-	317	341	360	-	361	388	410	-	406	437	461	-	449	483	510	-
		LO PR	107	114	124	-	113	120	131	-	117	125	136	-	123	131	143	-	129	137	150	-	134	142	155	-
		MBh	45.1	46.7	51.2	-	44.0	45.6	50.0	-	43.0	44.5	48.8	-	41.9	43.5	47.6	-	39.8	41.3	45.2	-	36.9	38.2	41.9	-
		S/T	0.77	0.64	0.44	-	0.80	0.67	0.46	-	0.82	0.68	0.47	-	0.84	0.70	0.49	-	0.87	0.73	0.51	-	0.88	0.74	0.51	-
		ΔT	18	15	12	-	18	16	12	-	18	16	12	-	18	16	12	-	18	15	12	-	17	14	11	-
<b>1800</b>		kW	3.31	3.38	3.48	-	3.55	3.62	3.73	-	3.76	3.83	3.95	-	3.94	4.02	4.15	-	4.10	4.18	4.32	-	4.23	4.32	4.46	-
		Amps	12.3	12.6	13.0	-	13.3	13.6	14.0	-	14.4	14.8	15.3	-	15.4	15.8	16.3	-	16.4	16.8	17.4	-	17.4	17.8	18.4	-
		HI PR	251	270	285	-	281	303	320	-	320	344	364	-	365	392	414	-	410	441	466	-	453	488	515	-
		LO PR	108	115	125	-	114	121	132	-	119	126	138	-	125	132	145	-	130	139	152	-	135	144	157	-

		MBh	38.2	39.3	42.6	45.7	36.3	37.4	40.5	43.4	33.6	34.6	37.5	40.2
		S/T	0.88	0.79	0.60	0.38	0.91	0.82	0.62	0.40	0.96	0.86	0.65	0.42
		ΔT	22	20	17	12	22	20	16	11	20	18	15	11
<b>1400</b>		kW	3.85	3.93	4.05	4.18	4.00	4.09	4.21	4.35	4.13	4.22	4.35	4.49
		Amps	15.0	15.4	15.9	16.5	15.9	16.3	16.9	17.5	16.9	17.3	17.9	18.6
		HI PR	354	381	402	419	398	428	452	472	440	473	500	521
		LO PR	121	129	140	149	127	135	147	157	131	139	152	162
		MBh	41.4	42.6	46.1	49.5	39.3	40.5	43.8	47.0	36.4	37.5	40.6	43.6
		S/T	0.91	0.82	0.62	0.40	0.95	0.85	0.64	0.41	0.96	0.86	0.65	0.42
		ΔT	22	20	16	11	21	20	16	11	20	18	15	10
<b>1600</b>		kW	3.94	4.02	4.15	4.28	4.10	4.18	4.32	4.45	4.23	4.32	4.46	4.60
		Amps	15.4	15.8	16.3	16.9	16.4	16.8	17.4	18.0	17.4	17.8	18.4	19.1
		HI PR	365	392	414	432	410	441	466	486	453	488	515	537
		LO PR	125	132	145	154	131	139	152	161	135	144	157	167
		MBh	42.6	43.9	47.5	51.0	40.5	41.7	45.1	48.5	37.5	38.6	41.8	44.9
		S/T	0.96	0.86	0.65	0.42	0.99	0.89	0.67	0.43	1.00	0.90	0.68	0.44
		ΔT	21	19	16	11	21	19	16	11	19	18	14	10
<b>1800</b>		kW	3.97	4.06	4.18	4.31	4.13	4.22	4.35	4.49	4.27	4.36	4.50	4.64
		Amps	15.6	15.9	16.5	17.1	16.6	17.0	17.5	18.2	17.5	18.0	18.6	19.3
		HI PR	368	396	418	436	414	446	471	491	458	493	520	543
		LO PR	126	134	146	156	132	140	153	163	136	145	158	169

IDB: Entering Indoor Dry Bulb Temperature  
 High and low pressures are measured at the liquid and suction service valves.  
 Shaded area reflects ACCA (TVA) conditions  
 Amps = outdoor unit amps (comp.+fan)  
 kW = Total system power

IDB	AIRFLOW	OUTDOOR AMBIENT TEMPERATURE												ENTERING INDOOR WET BULB TEMPERATURE											
		65°F				75°F				85°F				95°F				105°F				115°F			
		59	63	67	71	59	63	67	71	59	63	67	71	59	63	67	71	59	63	67	71	59	63	67	71
80	MBh	41.8	42.7	45.6	48.8	40.8	41.7	44.6	47.7	39.9	40.7	43.5	46.5	38.9	39.7	42.5	45.4	36.9	37.8	40.3	43.1	34.2	35.0	37.4	39.9
	S/T	0.88	0.83	0.67	0.5	0.91	0.86	0.70	0.52	0.94	0.88	0.71	0.5	0.97	0.91	0.74	0.55	1.00	0.94	0.77	0.6	1.01	0.95	0.77	0.58
	ΔT	24	23	20	16	24	23	20	16	25	23	20	16	25	24	21	16	24	23	20	16	23	22	19	15
	kW	3.26	3.33	3.42	3.5	3.49	3.56	3.67	3.78	3.70	3.77	3.89	4.0	3.88	3.96	4.08	4.21	4.03	4.12	4.25	4.4	4.17	4.25	4.39	4.53
	Amps	12.1	12.3	12.7	13.2	13.0	13.3	13.8	14.3	14.2	14.5	15.0	15.5	15.1	15.5	16.0	16.6	16.1	16.5	17.0	17.7	17.1	17.5	18.1	18.8
	HI PR	246	264	279	291.3	276	297	313	327	314	338	356	371.7	357	384	406	423	402	432	457	476.3	444	478	505	526
	LO PR	106	113	123	130.9	112	119	130	138	116	124	135	143.7	122	130	142	151	128	136	149	158.2	132	141	154	164
	MBh	45.3	46.3	49.5	52.9	44.2	45.2	48.3	51.6	43.2	44.1	47.2	50.4	42.1	43.1	46.0	49.2	40.0	40.9	43.7	46.7	37.1	37.9	40.5	43.3
	S/T	0.91	0.86	0.70	0.5	0.95	0.89	0.72	0.54	0.97	0.91	0.74	0.6	1.00	0.94	0.77	0.57	1.00	0.98	0.79	0.6	1.00	0.98	0.80	0.60
	ΔT	24	23	20	16	24	23	20	16	24	23	20	16	24	23	20	16	23	23	20	16	21	21	19	15
	kW	3.34	3.40	3.50	3.6	3.58	3.65	3.76	3.87	3.79	3.86	3.98	4.1	3.97	4.06	4.18	4.31	4.13	4.22	4.35	4.5	4.27	4.36	4.50	4.64
	Amps	12.4	12.7	13.1	13.6	13.4	13.7	14.2	14.7	14.6	14.9	15.4	16.0	15.6	15.9	16.5	17.1	16.6	17.0	17.5	18.2	17.5	18.0	18.6	19.3
HI PR	253	273	288	300.3	284	306	323	337	323	348	367	383.2	368	396	419	436	414	446	471	491.1	458	493	520	543	
LO PR	109	116	127	134.9	115	123	134	143	120	127	139	148.1	126	134	146	156	132	140	153	163.1	136	145	158	169	
MBh	46.7	47.7	50.9	54.4	45.6	46.6	49.7	53.2	44.5	45.5	48.6	51.9	43.4	44.3	47.4	50.6	41.2	42.1	45.0	48.1	38.2	39.0	41.7	44.6	
S/T	0.96	0.90	0.73	0.5	1.00	0.93	0.76	0.57	1.00	0.95	0.78	0.6	1.00	1.00	0.80	0.60	1.00	1.00	0.83	0.6	1.00	1.00	0.84	0.63	
ΔT	23	22	19	15	23	22	19	15	23	22	19	15	22	23	19	16	21	22	19	15	20	20	18	14	
kW	3.36	3.43	3.53	3.6	3.60	3.68	3.79	3.90	3.82	3.89	4.01	4.1	4.00	4.09	4.21	4.35	4.16	4.25	4.39	4.5	4.30	4.39	4.53	4.68	
Amps	12.5	12.8	13.2	13.7	13.5	13.8	14.3	14.8	14.7	15.0	15.5	16.1	15.7	16.1	16.6	17.2	16.7	17.1	17.7	18.4	17.7	18.1	18.8	19.5	
HI PR	256	275	291	303.3	287	309	326	340	327	351	371	387.1	372	400	423	441	418	450	476	496.0	462	498	525	548	
LO PR	110	117	128	136.3	116	124	135	144	121	129	140	149.6	127	135	148	157	133	142	155	164.7	138	147	160	170	
85	MBh	42.5	43.4	45.4	48.5	41.5	42.4	44.4	47.3	40.6	41.3	43.3	46.2	39.6	40.3	42.2	45.1	37.6	38.3	40.1	42.8	34.8	35.5	37.2	39.7
	S/T	0.92	0.89	0.80	0.65	0.96	0.92	0.83	0.68	0.98	0.95	0.85	0.69	1.00	0.98	0.88	0.72	1.00	1.00	0.92	0.74	1.00	1.00	0.92	0.75
	ΔT	26	25	24	21	26	26	24	21	26	26	24	21	26	26	24	21	25	25	24	21	23	23	23	20
	kW	3.29	3.35	3.45	3.55	3.52	3.59	3.70	3.81	3.73	3.80	3.92	4.04	3.91	3.99	4.11	4.24	4.07	4.15	4.28	4.42	4.20	4.29	4.42	4.56
	Amps	12.2	12.5	12.9	13.3	13.1	13.5	13.9	14.4	14.3	14.6	15.1	15.7	15.3	15.6	16.2	16.8	16.2	16.6	17.2	17.9	17.2	17.6	18.2	18.9
	HI PR	248	267	282	294	279	300	317	330	317	341	360	375	361	388	410	428	406	437	461	481	448	483	510	532
	LO PR	107	114	124	132	113	120	131	140	117	125	136	145	123	131	143	152	129	137	150	160	134	142	155	165
	MBh	46.1	47.0	49.2	52.5	45.0	45.9	48.1	51.3	43.9	44.8	46.9	50.1	42.9	43.7	45.8	48.8	40.7	41.5	43.5	46.4	37.7	38.5	40.3	43.0
	S/T	0.96	0.92	0.83	0.68	0.99	0.96	0.86	0.70	1.00	0.98	0.89	0.72	1.00	1.00	0.91	0.74	1.00	1.00	0.95	0.77	1.00	1.00	0.96	0.78
	ΔT	25	25	24	20	26	25	24	21	25	25	24	21	25	25	24	21	23	24	24	21	22	22	22	19
	kW	3.36	3.43	3.53	3.64	3.60	3.68	3.79	3.90	3.82	3.89	4.01	4.14	4.00	4.09	4.21	4.35	4.16	4.25	4.39	4.53	4.30	4.39	4.53	4.68
	Amps	12.5	12.8	13.2	13.7	13.5	13.8	14.3	14.8	14.7	15.0	15.5	16.1	15.7	16.1	16.6	17.2	16.7	17.1	17.7	18.4	17.7	18.1	18.8	19.5
HI PR	256	275	291	303	287	309	326	340	327	351	371	387	372	400	423	441	418	450	476	496	462	498	525	548	
LO PR	110	117	128	136	116	124	135	144	121	129	140	150	127	135	148	157	133	142	155	165	138	147	160	170	
MBh	47.5	48.4	50.7	54.1	46.4	47.3	49.5	52.8	45.3	46.1	48.3	51.6	44.2	45.0	47.1	50.3	42.0	42.8	44.8	47.8	38.9	39.6	41.5	44.3	
S/T	1.00	0.97	0.87	0.71	1.00	1.00	0.91	0.74	1.00	1.00	0.93	0.75	1.00	1.00	0.96	0.78	1.00	1.00	0.95	0.81	1.00	1.00	0.96	0.81	
ΔT	24	24	23	20	24	24	23	20	23	24	23	20	23	23	23	20	21	22	23	20	20	20	21	18	
kW	3.39	3.45	3.56	3.66	3.63	3.70	3.82	3.93	3.85	3.93	4.05	4.17	4.04	4.12	4.25	4.38	4.20	4.29	4.42	4.56	4.34	4.43	4.57	4.72	
Amps	12.6	12.9	13.3	13.8	13.6	14.0	14.4	15.0	14.8	15.2	15.7	16.3	15.8	16.2	16.8	17.4	16.9	17.3	17.9	18.5	17.9	18.3	18.9	19.7	
HI PR	258	278	294	306	290	312	330	344	330	355	375	391	376	404	427	445	423	455	480	501	467	503	531	553	
LO PR	111	118	129	138	118	125	137	145	122	130	142	151	128	137	149	159	134	143	156	166	139	148	162	172	

IDB: Entering Indoor Dry Bulb Temperature  
 High and low pressures are measured at the liquid and suction service valves.  
 Shaded area reflects AHRI conditions  
 Amps = outdoor unit amps (comp.+fan)  
 kW = Total system power

IDB		OUTDOOR AMBIENT TEMPERATURE																							
		65°F				75°F				85°F				95°F				105°F				115°F			
		59	63	67	71	59	63	67	71	59	63	67	71	59	63	67	71	59	63	67	71	59	63	67	71
<b>1750</b>	MBh	54.2	56.2	61.6	-	53.0	54.9	60.1	-	51.7	53.6	58.7	-	50.4	52.3	57.3	-	47.9	49.7	54.4	-	44.4	46.0	50.4	-
	S/T	0.69	0.58	0.40	-	0.72	0.60	0.42	-	0.74	0.62	0.43	-	0.76	0.64	0.44	-	0.79	0.66	0.46	-	0.80	0.66	0.46	-
	ΔT	20	17	13	-	20	17	13	-	20	17	13	-	20	17	13	-	20	17	13	-	19	16	12	-
	kW	4.03	4.11	4.24	-	4.33	4.42	4.56	-	4.60	4.70	4.85	-	4.83	4.94	5.10	-	5.03	5.14	5.31	-	5.21	5.32	5.49	-
	Amps	15.2	15.6	16.1	-	16.5	16.9	17.5	-	18.0	18.4	19.0	-	19.2	19.7	20.4	-	20.5	21.0	21.7	-	21.7	22.3	23.0	-
	HI PR	259	279	294	-	291	313	330	-	331	356	376	-	376	405	428	-	423	456	481	-	468	504	532	-
	LO PR	105	112	122	-	111	118	129	-	116	123	134	-	122	129	141	-	127	135	148	-	132	140	153	-
	MBh	54.2	56.2	61.6	-	53.0	54.9	60.1	-	51.7	53.6	58.7	-	50.4	52.3	57.3	-	47.9	49.7	54.4	-	44.4	46.0	50.4	-
	S/T	0.69	0.58	0.40	-	0.72	0.60	0.42	-	0.74	0.62	0.43	-	0.76	0.64	0.44	-	0.79	0.66	0.46	-	0.80	0.66	0.46	-
	ΔT	20	17	13	-	20	17	13	-	20	17	13	-	20	17	13	-	20	17	13	-	19	16	12	-
kW	4.03	4.11	4.24	-	4.33	4.42	4.56	-	4.60	4.70	4.85	-	4.83	4.94	5.10	-	5.03	5.14	5.31	-	5.21	5.32	5.49	-	
Amps	15.2	15.6	16.1	-	16.5	16.9	17.5	-	18.0	18.4	19.0	-	19.2	19.7	20.4	-	20.5	21.0	21.7	-	21.7	22.3	23.0	-	
HI PR	259	279	294	-	291	313	330	-	331	356	376	-	376	405	428	-	423	456	481	-	468	504	532	-	
LO PR	105	112	122	-	111	118	129	-	116	123	134	-	122	129	141	-	127	135	148	-	132	140	153	-	
MBh	56.1	58.2	63.7	-	54.8	56.8	62.3	-	53.5	55.5	60.8	-	52.2	54.1	59.3	-	49.6	51.4	56.3	-	45.9	47.6	52.2	-	
S/T	0.74	0.62	0.43	-	0.76	0.64	0.44	-	0.78	0.65	0.45	-	0.81	0.68	0.47	-	0.84	0.70	0.49	-	0.85	0.71	0.49	-	
ΔT	17	15	11	-	17	15	11	-	17	15	11	-	17	15	11	-	17	15	11	-	16	14	10	-	
kW	4.09	4.18	4.31	-	4.40	4.49	4.63	-	4.67	4.77	4.92	-	4.91	5.02	5.18	-	5.12	5.23	5.40	-	5.29	5.41	5.58	-	
Amps	15.5	15.9	16.4	-	16.8	17.2	17.8	-	18.3	18.8	19.4	-	19.6	20.1	20.8	-	20.9	21.4	22.1	-	22.1	22.7	23.5	-	
HI PR	264	284	300	-	296	319	337	-	337	363	383	-	384	413	436	-	432	465	491	-	477	514	542	-	
LO PR	107	114	125	-	114	121	132	-	118	126	137	-	124	132	144	-	130	138	151	-	134	143	156	-	

IDB		OUTDOOR AMBIENT TEMPERATURE																							
		65°F				75°F				85°F				95°F				105°F				115°F			
		59	63	67	71	59	63	67	71	59	63	67	71	59	63	67	71	59	63	67	71	59	63	67	71
<b>1750</b>	MBh	55.1	56.8	61.5	66.0	53.9	55.5	60.0	64.4	52.6	54.1	58.6	62.9	51.3	52.8	57.2	61.4	48.7	50.2	54.3	58.3	45.1	46.5	50.3	54.0
	S/T	0.79	0.71	0.53	0.34	0.82	0.73	0.55	0.36	0.84	0.75	0.57	0.36	0.86	0.77	0.59	0.38	0.90	0.80	0.61	0.39	0.91	0.81	0.61	0.39
	ΔT	23	21	17	12	23	21	17	12	23	21	17	12	23	21	18	12	23	21	17	12	21	20	16	11
	kW	4.06	4.15	4.27	4.41	4.37	4.46	4.60	4.75	4.64	4.74	4.89	5.04	4.87	4.98	5.14	5.31	5.07	5.19	5.35	5.53	5.25	5.36	5.54	5.72
	Amps	15.4	15.8	16.3	16.9	16.7	17.1	17.6	18.3	18.1	18.6	19.2	20.0	19.4	19.9	20.6	21.4	20.7	21.2	21.9	22.8	21.9	22.5	23.3	24.2
	HI PR	262	282	297	310	294	316	334	348	334	359	379	396	380	409	432	451	428	460	486	507	473	509	537	560
	LO PR	106	113	124	132	112	120	131	139	117	124	136	145	123	131	143	152	129	137	149	159	133	142	155	165
	MBh	55.1	56.8	61.5	66.0	53.9	55.5	60.0	64.4	52.6	54.1	58.6	62.9	51.3	52.8	57.2	61.4	48.7	50.2	54.3	58.3	45.1	46.5	50.3	54.0
	S/T	0.79	0.71	0.53	0.34	0.82	0.73	0.55	0.36	0.84	0.75	0.57	0.36	0.86	0.77	0.59	0.38	0.90	0.80	0.61	0.39	0.91	0.81	0.61	0.39
	ΔT	23	21	17	12	23	21	17	12	23	21	17	12	23	21	18	12	23	21	17	12	21	20	16	11
kW	4.06	4.15	4.27	4.41	4.37	4.46	4.60	4.75	4.64	4.74	4.89	5.04	4.87	4.98	5.14	5.31	5.07	5.19	5.35	5.53	5.25	5.36	5.54	5.72	
Amps	15.4	15.8	16.3	16.9	16.7	17.1	17.6	18.3	18.1	18.6	19.2	20.0	19.4	19.9	20.6	21.4	20.7	21.2	21.9	22.8	21.9	22.5	23.3	24.2	
HI PR	262	282	297	310	294	316	334	348	334	359	379	396	380	409	432	451	428	460	486	507	473	509	537	560	
LO PR	106	113	124	132	112	120	131	139	117	124	136	145	123	131	143	152	129	137	149	159	133	142	155	165	
MBh	57.1	58.8	63.6	68.3	55.8	57.4	62.1	66.7	54.4	56.0	60.7	65.1	53.1	54.7	59.2	63.5	50.4	51.9	56.2	60.3	46.7	48.1	52.1	55.9	
S/T	0.84	0.75	0.57	0.36	0.87	0.78	0.59	0.38	0.89	0.80	0.60	0.39	0.92	0.82	0.62	0.40	0.95	0.85	0.65	0.42	0.96	0.86	0.65	0.42	
ΔT	20	18	15	10	20	18	15	10	20	18	15	10	20	18	15	10	20	18	15	10	18	17	14	10	
kW	4.13	4.21	4.34	4.48	4.44	4.53	4.67	4.82	4.71	4.81	4.97	5.13	4.95	5.06	5.22	5.40	5.16	5.27	5.44	5.62	5.34	5.45	5.63	5.82	
Amps	15.7	16.1	16.6	17.2	17.0	17.4	18.0	18.7	18.5	18.9	19.6	20.3	19.8	20.3	21.0	21.8	21.1	21.6	22.3	23.2	22.4	22.9	23.7	24.6	
HI PR	267	287	303	316	299	322	340	355	341	366	387	404	388	417	441	460	436	470	496	517	482	519	548	571	
LO PR	109	115	126	134	115	122	133	142	119	127	138	147	125	133	145	155	131	140	152	162	136	144	158	168	

IDB: Entering Indoor Dry Bulb Temperature  
 High and low pressures are measured at the liquid and suction service valves.  
 Shaded area reflects ACCA (TVA) conditions  
 Amps = outdoor unit amps (comp.+fan)  
 kW = Total system power

IDB		OUTDOOR AMBIENT TEMPERATURE												ENTERING INDOOR WET BULB TEMPERATURE											
		65°F				75°F				85°F				95°F				105°F				115°F			
		59	63	67	71	59	63	67	71	59	63	67	71	59	63	67	71	59	63	67	71	59	63	67	71
<b>1750</b>	MbH	56.1	57.4	61.3	65.5	54.8	56.0	59.9	64.0	53.5	54.7	58.4	62.5	52.2	53.4	57.0	60.9	49.6	50.7	54.2	57.9	45.9	46.9	50.2	53.6
	S/T	0.86	0.81	0.66	0.5	0.90	0.84	0.68	0.51	0.92	0.86	0.70	0.5	0.95	0.89	0.72	0.54	0.98	0.92	0.75	0.6	0.99	0.93	0.76	0.57
	ΔT	25	24	21	17	26	25	22	17	26	25	22	17	26	25	22	17	26	25	21	17	24	23	20	16
	KW	4.09	4.18	4.31	4.4	4.40	4.49	4.64	4.78	4.67	4.77	4.93	5.1	4.91	5.02	5.18	5.35	5.12	5.23	5.40	5.6	5.29	5.41	5.59	5.77
	Amps	15.5	15.9	16.4	17.1	16.8	17.2	17.8	18.5	18.3	18.8	19.4	20.1	19.6	20.1	20.8	21.6	20.9	21.4	22.1	23.0	22.2	22.7	23.5	24.4
	HI PR	264	284	300	313.2	297	319	337	351	337	363	383	399.7	384	413	437	455	432	465	491	512.2	477	514	543	566
	LO PR	107	114	125	133.0	114	121	132	140	118	126	137	146.0	124	132	144	153	130	138	151	160.7	134	143	156	166
	MbH	56.1	57.4	61.3	65.5	54.8	56.0	59.9	64.0	53.5	54.7	58.4	62.5	52.2	53.4	57.0	60.9	49.6	50.7	54.2	57.9	45.9	46.9	50.2	53.6
	S/T	0.86	0.81	0.66	0.5	0.90	0.84	0.68	0.51	0.92	0.86	0.70	0.5	0.95	0.89	0.72	0.54	0.98	0.92	0.75	0.6	0.99	0.93	0.76	0.57
	ΔT	25	24	21	17	26	25	22	17	26	25	22	17	26	25	22	17	26	25	21	17	24	23	20	16
KW	4.09	4.18	4.31	4.4	4.40	4.49	4.64	4.78	4.67	4.77	4.93	5.1	4.91	5.02	5.18	5.35	5.12	5.23	5.40	5.6	5.29	5.41	5.59	5.77	
Amps	15.5	15.9	16.4	17.1	16.8	17.2	17.8	18.5	18.3	18.8	19.4	20.1	19.6	20.1	20.8	21.6	20.9	21.4	22.1	23.0	22.2	22.7	23.5	24.4	
HI PR	264	284	300	313.2	297	319	337	351	337	363	383	399.7	384	413	437	455	432	465	491	512.2	477	514	543	566	
LO PR	107	114	125	133.0	114	121	132	140	118	126	137	146.0	124	132	144	153	130	138	151	160.7	134	143	156	166	
MbH	58.1	59.4	63.4	67.8	56.7	58.0	61.9	66.2	55.4	56.6	60.5	64.6	54.0	55.2	59.0	63.1	51.3	52.5	56.0	59.9	47.6	48.6	51.9	55.5	
S/T	0.92	0.86	0.70	0.5	0.95	0.89	0.73	0.54	1.00	0.92	0.75	0.6	1.00	0.95	0.77	0.58	1.00	1.00	0.80	0.6	1.00	1.00	0.81	0.60	
ΔT	22	21	18	15	22	21	18	15	23	21	18	15	22	21	19	15	21	21	18	15	19	20	17	14	
KW	4.16	4.24	4.38	4.5	4.47	4.57	4.71	4.86	4.75	4.85	5.01	5.2	4.99	5.10	5.27	5.44	5.20	5.32	5.49	5.7	5.38	5.50	5.68	5.87	
Amps	15.8	16.2	16.7	17.4	17.1	17.6	18.1	18.8	18.6	19.1	19.8	20.5	20.0	20.5	21.2	22.0	21.3	21.8	22.6	23.4	22.6	23.1	23.9	24.9	
HI PR	270	290	306	319.5	302	326	344	358	344	370	391	407.7	392	422	445	464	441	474	501	522.4	487	524	553	577	
LO PR	110	117	127	135.6	116	123	135	143	120	128	140	148.9	126	135	147	156	133	141	154	163.9	137	146	159	170	
MbH	57.1	58.2	61.0	65.0	55.8	56.9	59.6	63.5	54.5	55.5	58.1	62.0	53.1	54.2	56.7	60.5	50.5	51.4	53.9	57.5	46.7	47.7	49.9	53.2	
S/T	0.91	0.87	0.79	0.64	0.94	0.91	0.82	0.66	0.96	0.93	0.84	0.68	0.99	0.96	0.87	0.70	1.00	1.00	0.90	0.73	1.00	1.00	0.91	0.74	
ΔT	27	27	25	22	28	27	26	22	28	27	26	22	28	27	26	22	27	27	25	22	25	25	24	21	
KW	4.13	4.21	4.34	4.48	4.44	4.53	4.67	4.82	4.71	4.81	4.97	5.13	4.95	5.06	5.22	5.40	5.16	5.27	5.44	5.63	5.34	5.45	5.63	5.82	
Amps	15.7	16.1	16.6	17.2	17.0	17.4	18.0	18.7	18.5	18.9	19.6	20.3	19.8	20.3	21.0	21.8	21.1	21.6	22.3	23.2	22.4	22.9	23.7	24.6	
HI PR	267	287	303	316	300	322	340	355	341	367	387	404	388	417	441	460	436	470	496	517	482	519	548	572	
LO PR	109	116	126	134	115	122	133	142	119	127	138	147	125	133	145	155	131	140	152	162	136	144	158	168	
MbH	57.1	58.2	61.0	65.0	55.8	56.9	59.6	63.5	54.5	55.5	58.1	62.0	53.1	54.2	56.7	60.5	50.5	51.4	53.9	57.5	46.7	47.7	49.9	53.2	
S/T	0.91	0.87	0.79	0.64	0.94	0.91	0.82	0.66	0.96	0.93	0.84	0.68	0.99	0.96	0.87	0.70	1.00	1.00	0.90	0.73	1.00	1.00	0.91	0.74	
ΔT	27	27	25	22	28	27	26	22	28	27	26	22	28	27	26	22	27	27	25	22	25	25	24	21	
KW	4.13	4.21	4.34	4.48	4.44	4.53	4.67	4.82	4.71	4.81	4.97	5.13	4.95	5.06	5.22	5.40	5.16	5.27	5.44	5.63	5.34	5.45	5.63	5.82	
Amps	15.7	16.1	16.6	17.2	17.0	17.4	18.0	18.7	18.5	18.9	19.6	20.3	19.8	20.3	21.0	21.8	21.1	21.6	22.3	23.2	22.4	22.9	23.7	24.6	
HI PR	267	287	303	316	300	322	340	355	341	367	387	404	388	417	441	460	436	470	496	517	482	519	548	572	
LO PR	109	116	126	134	115	122	133	142	119	127	138	147	125	133	145	155	131	140	152	162	136	144	158	168	
MbH	59.1	60.3	63.1	67.3	57.7	58.8	61.6	65.8	56.4	57.4	60.2	64.2	55.0	56.0	58.7	62.6	52.2	53.2	55.8	59.5	48.4	49.3	51.7	55.1	
S/T	0.96	0.93	0.84	0.68	1.00	0.96	0.87	0.71	1.00	0.99	0.89	0.72	1.00	1.00	0.92	0.75	1.00	1.00	0.96	0.77	1.00	1.00	0.96	0.78	
ΔT	23	23	22	19	24	23	22	19	23	23	22	19	22	23	22	19	21	22	22	19	20	20	20	18	
KW	4.19	4.28	4.41	4.55	4.51	4.60	4.75	4.90	4.79	4.89	5.05	5.21	5.03	5.14	5.31	5.49	5.24	5.36	5.53	5.72	5.42	5.55	5.73	5.92	
Amps	16.0	16.4	16.9	17.5	17.3	17.7	18.3	19.0	18.8	19.3	19.9	20.7	20.1	20.7	21.4	22.2	21.5	22.0	22.8	23.7	22.8	23.4	24.2	25.1	
HI PR	272	293	309	323	305	329	347	362	347	374	395	412	396	426	450	469	445	479	506	528	492	529	559	583	
LO PR	111	118	129	137	117	124	136	145	122	129	141	150	128	136	148	158	134	142	155	166	138	147	161	171	

IDB: Entering Indoor Dry Bulb Temperature  
 High and low pressures are measured at the liquid and suction service valves.  
 Shaded area reflects AHRI conditions  
 Amps = outdoor unit amps (comp.+fan)  
 kW = Total system power

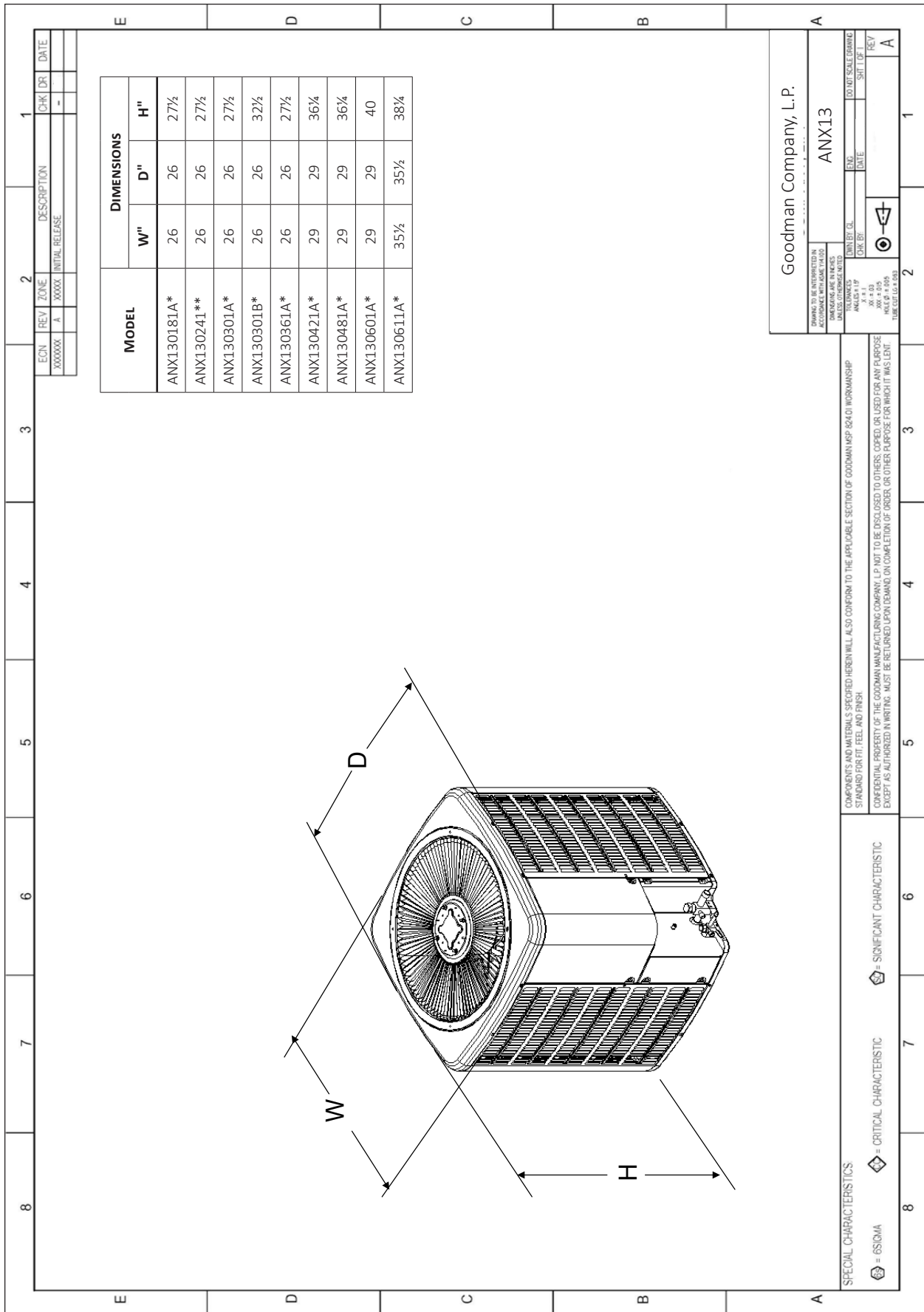
IDB		OUTDOOR AMBIENT TEMPERATURE												ENTERING INDOOR WET BULB TEMPERATURE											
		65°F				75°F				85°F				95°F				105°F				115°F			
		59	63	67	71	59	63	67	71	59	63	67	71	59	63	67	71	59	63	67	71	59	63	67	71
<b>70</b>	MBh	55.4	57.4	62.9	-	54.1	56.1	61.4	-	52.8	54.7	59.9	-	51.5	53.4	58.5	-	48.9	50.7	55.6	-	45.3	47.0	51.5	-
	S/T	0.68	0.57	0.39	-	0.71	0.59	0.41	-	0.72	0.61	0.42	-	0.75	0.62	0.43	-	0.78	0.65	0.45	-	0.78	0.65	0.45	-
	ΔT	20	17	13	-	20	17	13	-	20	17	13	-	20	18	13	-	20	17	13	-	19	16	12	-
	KW	4.00	4.08	4.21	-	4.31	4.40	4.54	-	4.58	4.68	4.84	-	4.82	4.93	5.09	-	5.03	5.14	5.31	-	5.20	5.32	5.50	-
	Amps	15.5	15.9	16.4	-	16.8	17.2	17.8	-	18.3	18.8	19.4	-	19.6	20.1	20.8	-	20.9	21.4	22.2	-	22.2	22.7	23.5	-
	HI PR	249	268	283	-	280	301	318	-	318	342	362	-	362	390	412	-	408	439	463	-	451	485	512	-
	LO PR	100	106	116	-	105	112	122	-	109	116	127	-	115	122	133	-	120	128	140	-	125	132	145	-
	MBh	53.8	55.7	61.0	-	52.5	54.4	59.6	-	51.3	53.1	58.2	-	50.0	51.8	56.8	-	47.5	49.2	53.9	-	44.0	45.6	50.0	-
	S/T	0.65	0.54	0.38	-	0.67	0.56	0.39	-	0.69	0.58	0.40	-	0.71	0.60	0.41	-	0.74	0.62	0.43	-	0.75	0.62	0.43	-
	ΔT	21	19	14	-	22	19	14	-	22	19	14	-	22	19	14	-	22	19	14	-	20	17	13	-
KW	3.97	4.05	4.18	-	4.27	4.37	4.51	-	4.54	4.64	4.80	-	4.78	4.89	5.05	-	4.99	5.10	5.27	-	5.16	5.28	5.45	-	
Amps	15.4	15.8	16.3	-	16.7	17.1	17.7	-	18.1	18.6	19.2	-	19.4	19.9	20.6	-	20.7	21.2	22.0	-	22.0	22.5	23.3	-	
HI PR	247	266	281	-	277	298	315	-	315	339	358	-	359	386	408	-	404	434	459	-	446	480	507	-	
LO PR	99	105	115	-	104	111	121	-	108	115	126	-	114	121	132	-	119	127	138	-	123	131	143	-	
MBh	55.6	57.7	63.2	-	54.3	56.3	61.7	-	53.0	55.0	60.2	-	51.8	53.6	58.8	-	49.2	51.0	55.8	-	45.5	47.2	51.7	-	
S/T	0.69	0.58	0.40	-	0.72	0.60	0.41	-	0.73	0.61	0.43	-	0.76	0.63	0.44	-	0.79	0.66	0.46	-	0.79	0.66	0.46	-	
ΔT	16	14	10	-	16	14	10	-	16	14	10	-	16	14	11	-	16	14	10	-	15	13	10	-	
KW	4.03	4.12	4.25	-	4.34	4.44	4.58	-	4.62	4.72	4.88	-	4.86	4.97	5.13	-	5.07	5.18	5.36	-	5.25	5.37	5.55	-	
Amps	15.7	16.1	16.6	-	17.0	17.4	18.0	-	18.5	19.0	19.6	-	19.8	20.3	21.0	-	21.1	21.6	22.4	-	22.4	23.0	23.7	-	
HI PR	252	271	286	-	283	304	321	-	321	346	365	-	366	394	416	-	412	443	468	-	455	490	517	-	
LO PR	101	107	117	-	106	113	123	-	110	118	128	-	116	123	135	-	122	129	141	-	126	134	146	-	

IDB		OUTDOOR AMBIENT TEMPERATURE												ENTERING INDOOR WET BULB TEMPERATURE											
		65°F				75°F				85°F				95°F				105°F				115°F			
		59	63	67	71	59	63	67	71	59	63	67	71	59	63	67	71	59	63	67	71	59	63	67	71
<b>75</b>	MBh	56.3	58.0	62.7	67.3	55.0	56.6	61.3	65.8	53.7	55.3	59.8	64.2	52.4	53.9	58.4	62.6	49.8	51.2	55.5	59.5	46.1	47.5	51.4	55.1
	S/T	0.78	0.69	0.52	0.34	0.80	0.72	0.54	0.35	0.82	0.74	0.56	0.36	0.85	0.76	0.58	0.37	0.88	0.79	0.60	0.38	0.89	0.80	0.60	0.39
	ΔT	23	21	17	12	23	21	18	12	23	21	18	12	23	22	18	12	23	21	17	12	22	20	16	11
	KW	4.03	4.12	4.25	4.39	4.34	4.44	4.58	4.73	4.62	4.72	4.88	5.04	4.86	4.97	5.14	5.31	5.07	5.18	5.36	5.54	5.25	5.37	5.55	5.74
	Amps	15.7	16.1	16.6	17.2	17.0	17.4	18.0	18.7	18.5	19.0	19.6	20.4	19.8	20.3	21.0	21.8	21.1	21.6	22.4	23.3	22.4	23.0	23.8	24.7
	HI PR	252	271	286	299	283	304	321	335	321	346	365	381	366	394	416	434	412	443	468	488	455	490	517	539
	LO PR	101	107	117	124	106	113	123	131	110	118	128	137	116	123	135	144	122	129	141	150	126	134	146	156
	MBh	54.7	56.3	60.9	65.4	53.4	55.0	59.5	63.9	52.1	53.7	58.1	62.3	50.9	<b>52.4</b>	56.7	60.8	48.3	49.7	53.8	57.8	44.7	46.1	49.9	53.5
	S/T	0.74	0.66	0.50	0.32	0.77	0.69	0.52	0.33	0.79	0.70	0.53	0.34	0.81	<b>0.73</b>	0.55	0.35	0.84	0.75	0.57	0.37	0.85	0.76	0.57	0.37
	ΔT	25	23	19	13	25	23	19	13	25	23	19	13	25	23	19	13	25	23	19	13	23	21	18	12
KW	4.00	4.09	4.21	4.35	4.31	4.40	4.54	4.69	4.58	4.68	4.84	5.00	4.82	<b>4.93</b>	5.09	5.26	5.03	5.14	5.31	5.49	5.20	5.32	5.50	5.69	
Amps	15.5	15.9	16.5	17.1	16.8	17.2	17.8	18.5	18.3	18.8	19.4	20.2	19.6	<b>20.1</b>	20.8	21.6	20.9	21.4	22.2	23.0	22.2	22.7	23.5	24.4	
HI PR	249	268	283	296	280	301	318	332	318	343	362	377	363	<b>390</b>	412	430	408	439	463	483	451	485	512	534	
LO PR	100	106	116	123	105	112	122	130	109	116	127	135	115	<b>122</b>	133	142	120	128	140	149	125	133	145	154	
MBh	56.6	58.3	63.1	67.7	55.3	56.9	61.6	66.1	53.9	55.5	60.1	64.5	52.6	54.2	58.7	63.0	50.0	51.5	55.7	59.8	46.3	47.7	51.6	55.4	
S/T	0.79	0.70	0.53	0.34	0.81	0.73	0.55	0.35	0.84	0.75	0.57	0.36	0.86	0.77	0.58	0.38	0.89	0.80	0.61	0.39	0.90	0.81	0.61	0.39	
ΔT	18	17	14	9	18	17	14	10	18	17	14	10	19	17	14	10	18	17	14	10	17	16	13	9	
KW	4.06	4.15	4.28	4.42	4.38	4.47	4.62	4.77	4.66	4.76	4.92	5.08	4.90	5.01	5.18	5.35	5.11	5.23	5.40	5.59	5.29	5.41	5.59	5.79	
Amps	15.8	16.2	16.8	17.4	17.1	17.6	18.2	18.9	18.7	19.1	19.8	20.6	20.0	20.5	21.2	22.0	21.3	21.8	22.6	23.5	22.6	23.2	24.0	24.9	
HI PR	254	274	289	302	285	307	324	338	325	349	369	385	370	398	420	438	416	448	473	493	460	495	522	545	
LO PR	102	108	118	126	107	114	125	133	112	119	130	138	117	125	136	145	123	131	143	152	127	135	148	157	

IDB: Entering Indoor Dry Bulb Temperature  
 High and low pressures are measured at the liquid and suction service valves.  
 Shaded area reflects ACCA (TVA) conditions  
 Amps = outdoor unit amps (comp.+fan)  
 kW = Total system power

IDB		OUTDOOR AMBIENT TEMPERATURE																																																																																																																																																																															
		65°F								75°F								85°F								95°F								105°F								115°F																																																																																																																																							
		59	63	67	71	59	63	67	71	59	63	67	71	59	63	67	71	59	63	67	71	59	63	67	71	59	63	67	71	59	63	67	71																																																																																																																																																
<b>1750</b>		MBh	57.3	58.6	62.6	66.9	56.0	57.2	61.1	65.3	54.6	55.8	59.6	63.8	53.3	54.5	58.2	62.2	50.6	51.7	55.3	59.1	46.9	47.9	51.2	54.7	S/T	0.85	0.80	0.65	0.5	0.88	0.83	0.67	0.50	0.90	0.85	0.69	0.5	0.93	0.87	0.71	0.53	0.97	0.91	0.74	0.6	1.00	0.92	0.75	0.56	ΔT	26	25	21	17	26	25	22	17	26	25	22	17	26	25	22	17	26	25	21	17	25	23	20	16	kW	4.06	4.15	4.28	4.4	4.38	4.48	4.62	4.77	4.66	4.76	4.92	5.1	4.90	5.01	5.18	5.35	5.11	5.23	5.40	5.6	5.29	5.41	5.59	5.79	Amps	15.8	16.2	16.8	17.4	17.1	17.6	18.2	18.9	18.7	19.1	19.8	20.6	20.0	20.5	21.2	22.0	21.3	21.8	22.6	23.5	22.6	23.2	24.0	24.9	HI PR	254	274	289	301.6	286	307	324	338	325	349	369	384.9	370	398	420	438	416	448	473	493.1	460	495	522	545	LO PR	102	108	118	125.7	107	114	125	133	112	119	130	138.0	117	125	136	145	123	131	143	152.0	127	135	148	157	
<b>80</b>		MBh	55.6	56.9	60.7	64.9	54.3	55.5	59.3	63.4	53.0	54.2	57.9	61.9	51.8	52.9	56.5	60.4	49.2	50.2	53.7	57.4	45.5	46.5	49.7	53.2	S/T	0.81	0.76	0.62	0.5	0.84	0.79	0.64	0.48	0.86	0.81	0.66	0.5	0.89	0.83	0.68	0.51	0.92	0.87	0.70	0.5	0.93	0.87	0.71	0.53	ΔT	28	26	23	18	28	27	23	19	28	27	23	19	28	27	23	19	28	27	23	19	26	25	22	17	kW	4.03	4.12	4.25	4.4	4.34	4.44	4.58	4.73	4.62	4.72	4.88	5.0	4.86	4.97	5.14	5.31	5.07	5.18	5.36	5.5	5.25	5.37	5.55	5.74	Amps	15.7	16.1	16.6	17.2	17.0	17.4	18.0	18.7	18.5	19.0	19.6	20.4	19.8	20.3	21.0	21.8	21.1	21.6	22.4	23.3	22.4	23.0	23.8	24.7	HI PR	252	271	286	298.6	283	304	321	335	321	346	365	381.0	366	394	416	434	412	443	468	488.2	455	490	517	539	LO PR	101	107	117	124.5	106	113	123	132	110	118	128	136.7	116	123	135	144	122	129	141	150.5	126	134	146	156	
<b>2250</b>		MBh	57.6	58.8	62.9	67.2	56.2	57.5	61.4	65.6	54.9	56.1	59.9	64.1	53.6	54.7	58.5	62.5	50.9	52.0	55.6	59.4	47.1	48.2	51.5	55.0	S/T	0.86	0.81	0.66	0.5	0.89	0.84	0.68	0.51	0.92	0.86	0.70	0.5	0.95	0.89	0.72	0.54	1.00	0.92	0.75	0.6	1.00	0.93	0.76	0.56	ΔT	20	19	17	14	21	20	17	14	21	20	17	14	21	20	17	14	21	20	17	14	19	18	16	13	kW	4.10	4.18	4.32	4.5	4.42	4.51	4.66	4.81	4.70	4.80	4.96	5.1	4.94	5.06	5.22	5.40	5.16	5.27	5.45	5.6	5.34	5.46	5.64	5.84	Amps	16.0	16.4	16.9	17.6	17.3	17.7	18.3	19.0	18.8	19.3	20.0	20.7	20.2	20.7	21.4	22.2	21.5	22.1	22.8	23.7	22.8	23.4	24.2	25.2	HI PR	257	277	292	305	288	310	328	342	328	353	373	388.7	373	402	424	443	420	452	477	498.0	464	500	528	550	LO PR	103	109	119	127.0	108	115	126	134	113	120	131	139.4	118	126	137	146	124	132	144	153.5	128	137	149	159	
<b>85</b>		MBh	58.3	59.4	62.2	66.4	56.9	58.1	60.8	64.9	55.6	56.7	59.4	63.3	54.2	55.3	57.9	61.8	51.5	52.5	55.0	58.7	47.7	48.7	51.0	54.4	S/T	0.89	0.86	0.78	0.63	0.92	0.89	0.80	0.65	0.95	0.91	0.82	0.67	0.98	0.94	0.85	0.69	1.00	0.98	0.88	0.72	1.00	0.99	0.89	0.72	ΔT	27	27	25	22	28	27	26	22	28	27	26	22	28	27	26	22	28	27	26	22	27	27	25	24	21	kW	4.10	4.19	4.32	4.46	4.42	4.51	4.66	4.81	4.70	4.80	4.96	5.12	4.95	5.06	5.22	5.40	5.16	5.27	5.45	5.63	5.34	5.46	5.64	5.84	Amps	16.0	16.4	16.9	17.6	17.3	17.7	18.3	19.0	18.8	19.3	20.0	20.7	20.2	20.7	21.4	22.2	21.5	22.1	22.8	23.7	22.8	23.4	24.2	25.2	HI PR	257	277	292	305	288	310	328	342	328	353	373	389	374	402	424	443	420	452	478	498	464	500	528	550	LO PR	103	109	119	127	108	115	126	134	113	120	131	139	118	126	138	146	124	132	144	153	128	137	149	159
<b>1750</b>		MBh	56.6	57.7	60.4	64.5	55.3	56.4	59.0	63.0	54.0	55.0	57.6	61.5	52.7	53.7	56.2	60.0	50.0	51.0	53.4	57.0	46.3	47.2	49.5	52.8	S/T	0.85	0.82	0.74	0.60	0.88	0.85	0.77	0.62	0.90	0.87	0.79	0.64	0.93	0.90	0.81	0.66	0.97	0.93	0.84	0.68	0.98	0.94	0.85	0.69	ΔT	29	29	27	24	30	29	28	24	30	29	28	24	30	30	28	24	30	29	28	24	28	27	26	22	kW	4.06	4.15	4.28	4.42	4.38	4.48	4.62	4.77	4.66	4.76	4.92	5.08	4.90	5.01	5.18	5.35	5.11	5.23	5.40	5.59	5.29	5.41	5.59	5.79	Amps	15.8	16.2	16.8	17.4	17.1	17.6	18.2	18.9	18.7	19.1	19.8	20.6	20.0	20.5	21.2	22.0	21.3	21.8	22.6	23.5	22.6	23.2	24.0	24.9	HI PR	254	274	289	302	286	307	324	338	325	349	369	385	370	398	420	438	416	448	473	493	460	495	522	545	LO PR	102	108	118	126	107	114	125	133	112	119	130	138	117	125	136	145	123	131	143	152	127	135	148	157	
<b>1500</b>		MBh	58.6	59.7	62.5	66.7	57.2	58.3	61.1	65.2	55.9	56.9	59.6	63.6	54.5	55.6	58.2	62.1	51.8	52.8	55.3	59.0	48.0	48.9	51.2	54.6	S/T	0.90	0.87	0.79	0.64	0.94	0.90	0.82	0.66	0.96	0.93	0.84	0.68	0.99	0.96	0.86	0.70	1.00	0.99	0.90	0.73	1.00	1.00	0.90	0.73	ΔT	22	21	20	17	22	22	20	18	22	22	20	18	22	22	21	18	21	21	20	18	20	20	20	19	16	kW	4.13	4.22	4.35	4.49	4.45	4.55	4.70	4.85	4.74	4.84	5.00	5.17	4.99	5.10	5.27	5.45	5.20	5.32	5.49	5.68	5.38	5.51	5.69	5.89	Amps	16.1	16.5	17.1	17.7	17.5	17.9	18.5	19.2	19.0	19.5	20.2	20.9	20.4	20.9	21.6	22.4	21.7	22.3	23.0	23.9	23.0	23.6	24.4	25.4	HI PR	260	279	295	308	291	313	331	345	331	356	376	393	377	406	429	447	424	457	482	503	469	505	533	556	LO PR	104	110	120	128	110	117	127	135	114	121	132	141	120	127	139	148	125	133	146	155	130	138	151	160
<b>2250</b>		MBh	58.6	59.7	62.5	66.7	57.2	58.3	61.1	65.2	55.9	56.9	59.6	63.6	54.5	55.6	58.2	62.1	51.8	52.8	55.3	59.0	48.0	48.9	51.2	54.6	S/T	0.90	0.87	0.79	0.64	0.94	0.90	0.82	0.66	0.96	0.93	0.84	0.68	0.99	0.96	0.86	0.70	1.00	0.99	0.90	0.73	1.00	1.00	0.90	0.73	ΔT	22	21	20	17	22	22	20	18	22	22	20	18	22	22	21	18	21	21	20	18	20	20	20	19	16	kW	4.13	4.22	4.35	4.49	4.45	4.55	4.70	4.85	4.74	4.84	5.00	5.17	4.99	5.10	5.27	5.45	5.20	5.32	5.49	5.68	5.38	5.51	5.69	5.89	Amps	16.1	16.5	17.1	17.7	17.5	17.9	18.5	19.2	19.0	19.5	20.2	20.9	20.4	20.9	21.6	22.4	21.7	22.3	23.0	23.9	23.0	23.6	24.4	25.4	HI PR	260	279	295	308	291	313	331	345	331	356	376	393	377	406	429	447	424	457	482	503	469	505	533	556	LO PR	104	110	120	128	110	117	127	135	114	121	132	141	120	127	139	148	125	133	146	155	130	138	151	160

IDB: Entering Indoor Dry Bulb Temperature  
 High and low pressures are measured at the liquid and suction service valves.  
 Shaded area reflects AHRI conditions  
 Amps = outdoor unit amps (comp.+fan)  
 kW = Total system power



MODEL	DIMENSIONS		
	W"	D"	H"
ANX130181A *	26	26	27½
ANX130241 **	26	26	27½
ANX130301A *	26	26	27½
ANX130301B *	26	26	32½
ANX130361A *	26	26	27½
ANX130421A *	29	29	36%
ANX130481A *	29	29	36%
ANX130601A *	29	29	40
ANX130611A *	35½	35½	38%

ECON	REV	ZONE	DESCRIPTION	CHK'DR	DATE
XXXXXX	A	XXXXX	INITIAL RELEASE	-	

Goodman Company, L.P.

ANX13

DO NOT SCALE DRAWING

DATE

REV A

COMPONENTS AND MATERIALS SPECIFIED HEREIN WILL ALSO CONFORM TO THE APPLICABLE SECTION OF GOODMAN MSP 824.0 WORKMANSHIP STANDARD FOR FIT, FEEL, AND FINISH.

CONFIDENTIAL PROPERTY OF THE GOODMAN MANUFACTURING COMPANY. LP NOT TO BE DISCLOSED TO OTHERS, COPIED, OR USED FOR ANY PURPOSE EXCEPT AS AUTHORIZED IN WRITING. MUST BE RETURNED UPON DEMAND ON COMPLETION OF ORDER OR OTHER PURPOSE FOR WHICH IT WAS LENT.

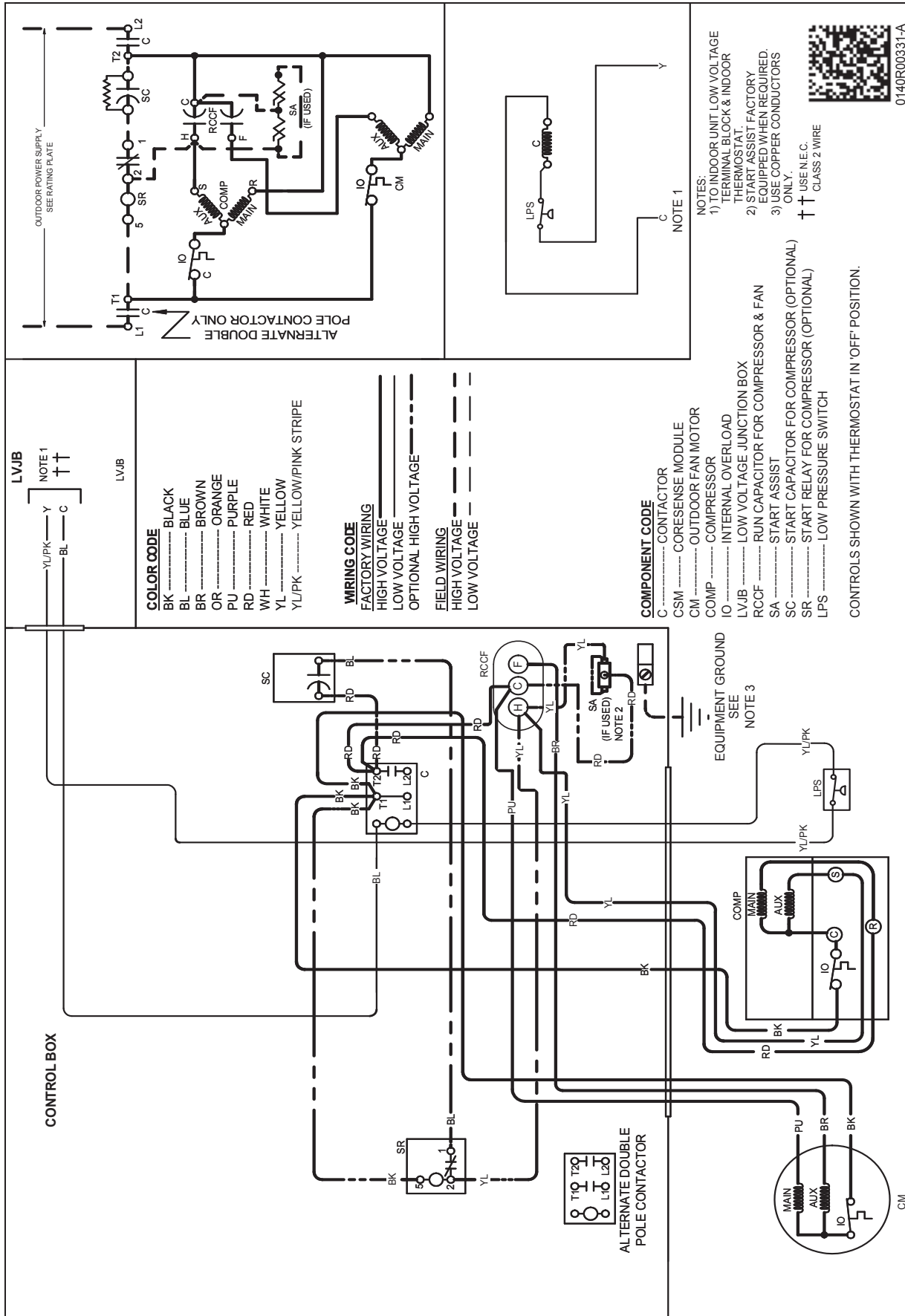
SPECIAL CHARACTERISTICS

⊕ = 6S04A

⊕ = CRITICAL CHARACTERISTIC

⊕ = SIGNIFICANT CHARACTERISTIC









MODEL	DESCRIPTION	ANX13 018**	ANX13 024**	ANX13 030**	ANX13 036**	ANX13 042**	ANX13 048**	ANX13 060**	ANX13 061**
ABK-20	Anchor Bracket Kit <sup>^</sup>		X	X	X	X	X	X	X
ABK-21	Anchor Bracket Kit <sup>^</sup>	X							
ASC-01	Anti-Short Cycle Kit	X	X	X	X	X	X	X	X
CSR-U-1	Hard-start Kit	X	X	X	X				
CSR-U-2	Hard-start Kit					X	X	X	X
CSR-U-3	Hard-start Kit						X	X	X
FSK01A <sup>1</sup>	Freeze Protection Kit	X	X	X	X	X	X	X	X
LSK02A <sup>2</sup>	Liquid Line Solenoid Kit	X	X	X	X	X	X	X	X
0130R00000S	Low-Pressure Switch Kit	X	X	X	X	X	X	X	X
LAKT01A	Low-Ambient Kit	X	X	X	X	X	X	X	X
TX2N4A <sup>2</sup>	TXV Kit	X	X						
TX3N4 <sup>2</sup>	TXV Kit			X	X				
TX5N4 <sup>2</sup>	TXV Kit					X	X	X	X

<sup>^</sup> Contains 20 brackets; four brackets needed to anchor unit to pad

<sup>1</sup> Installed on indoor coil

<sup>2</sup> Field-installed, non-bleed, expansion valve kit — Condensing units and heat pumps with reciprocating or rotary compressors require the use of start-assist components when used in conjunction with an indoor coil using a non-bleed thermal expansion valve refrigerant metering device or liquid line solenoid kit.

**All AHRI system ratings are accessible in the System Configurator tool via PartnerLink.**